

Central USD

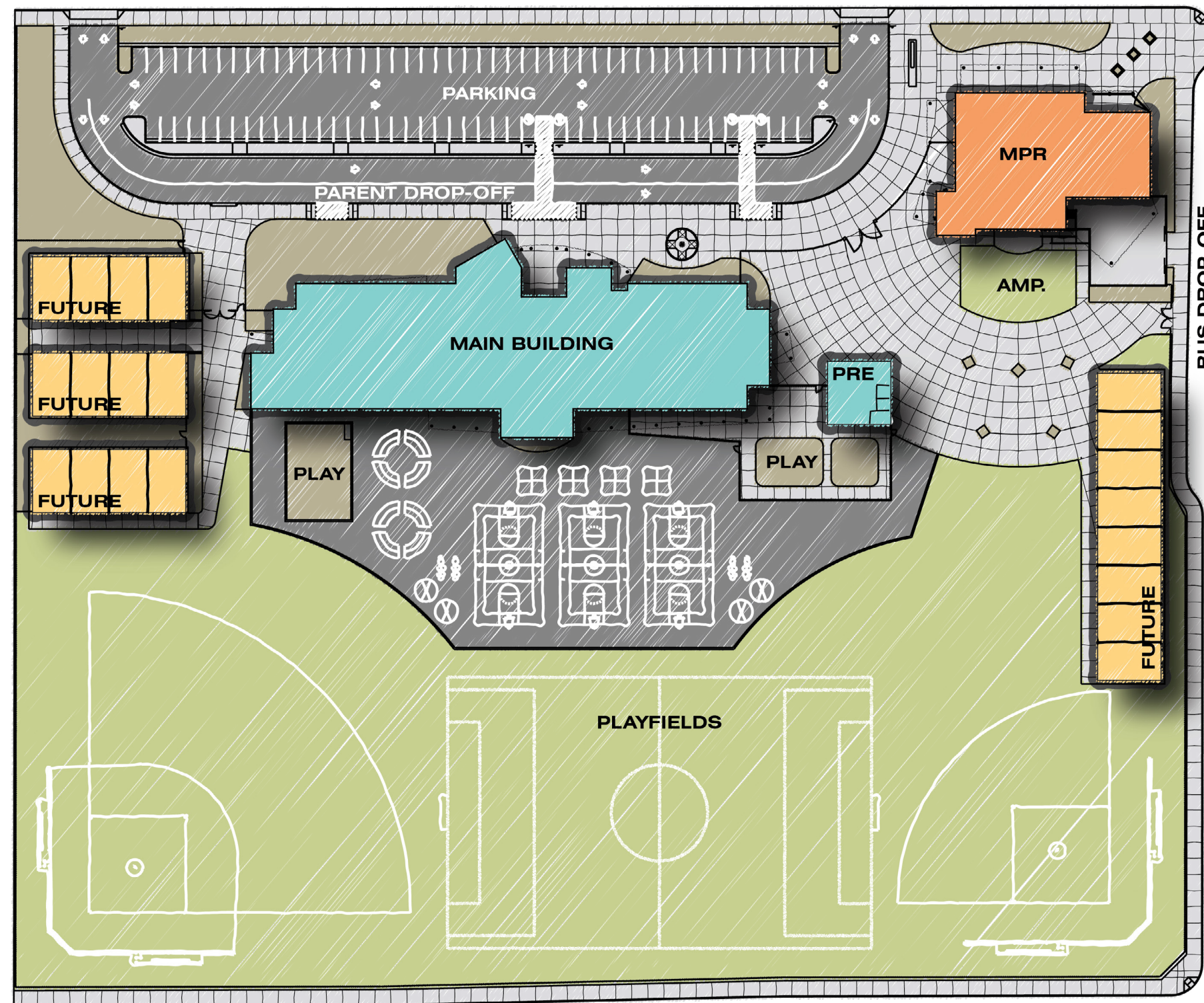
SHIELDS & BRAWLEY ELEMENTARY SCHOOL



SIMPRK

BETTER. TOGETHER.

SITE PLAN



SITE

10.12 ACRES
80 PARKING STALLS
1 BASEBALL FIELD
1 SOFTBALL FIELD
1 SOCCER FIELD
3 BASKETBALL COURTS



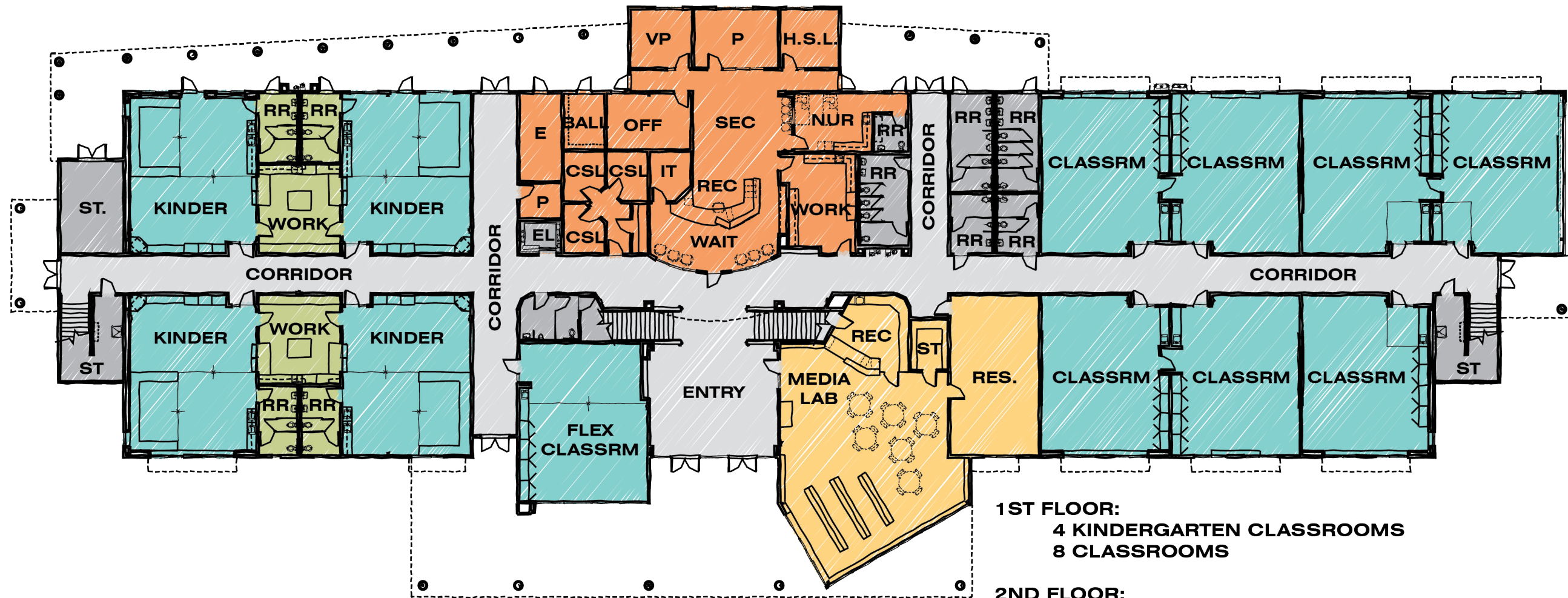
SHIELDS & BRAWLEY ELEMENTARY

SITE PLAN





FLOOR PLAN - FIRST FLOOR



1ST FLOOR:
4 KINDERGARTEN CLASSROOMS
8 CLASSROOMS

2ND FLOOR:
19 CLASSROOMS

TOTAL:
4 KINDERGARTEN CLASSROOMS = 100 STUDENTS
27 CLASSROOMS = 675 STUDENTS

775 STUDENTS

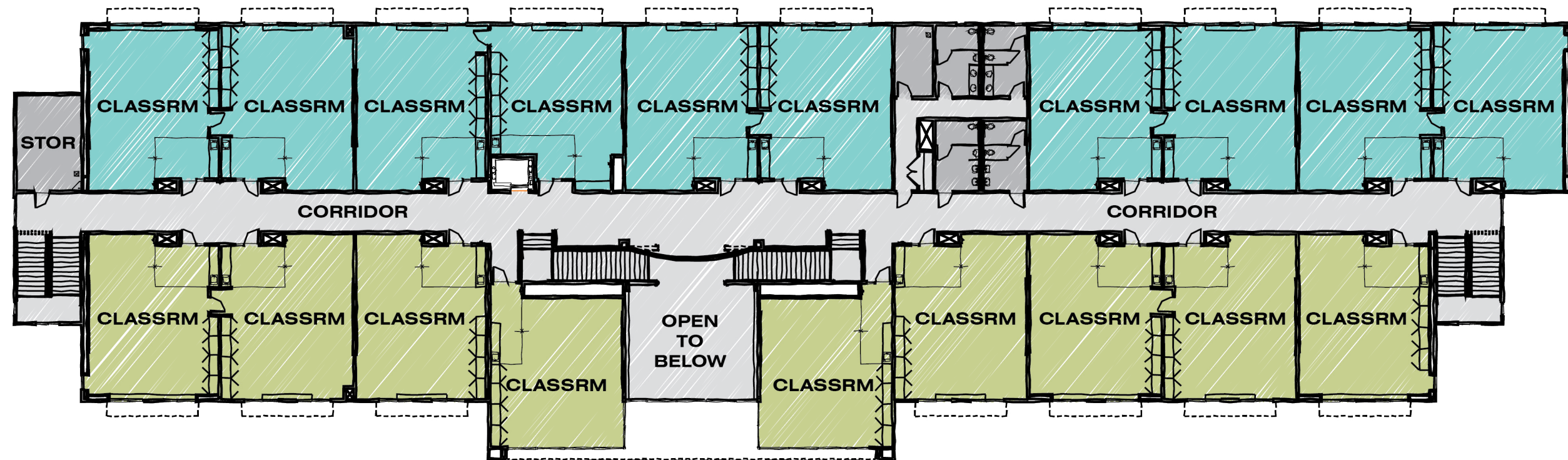
SHIELDS & BRAWLEY ELEMENTARY

MAIN BUILDING - FIRST FLOOR
FLOOR PLAN





FLOOR PLAN - SECOND FLOOR

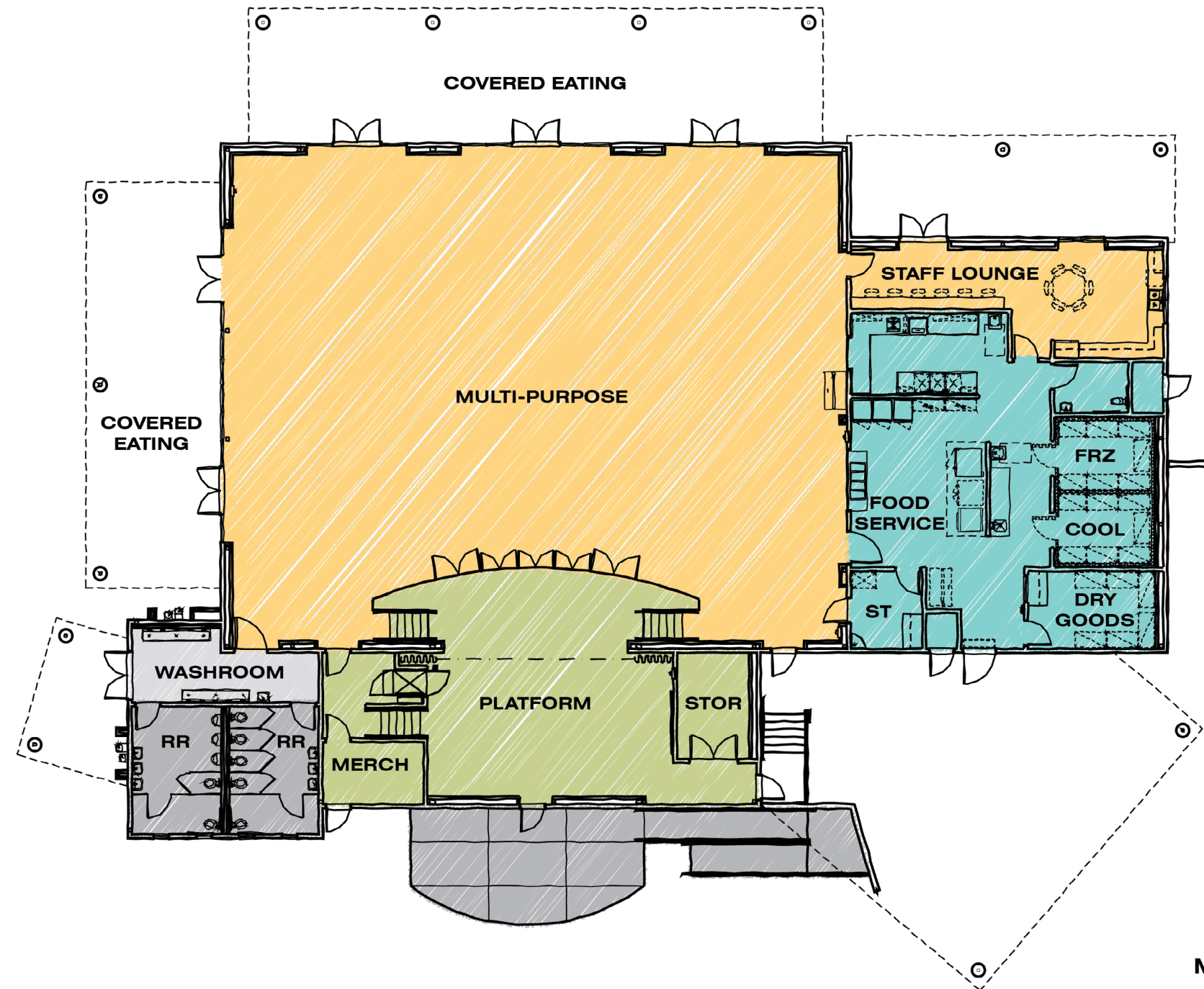


SHIELDS & BRAWLEY ELEMENTARY

MAIN BUILDING - SECOND FLOOR
FLOOR PLAN



MULTIPURPOSE ROOM



MULTI-PURPOSE

**690 ASSEMBLY
320 DINING**



SHIELDS & BRAWLEY ELEMENTARY

MULTI-PURPOSE BUILDING
FLOOR PLAN

