



February 21, 2018

Central Unified School District
4200 N. Grantland Avenue
Fresno, CA 93723

Re: 24x40 DSA Standard Classrooms
East HS

Attn: Bert Contreras
Director Operations Services

American Modular Systems is pleased to provide our proposal for the 24x40 DSA Standard Classrooms. Our pricing is based upon the floor plan attached to this proposal for reference.

Central USD is utilizing the provisions of the Santa Rita Union School District Facility Services Contract and the scope of work as listed below, and in the Inclusions and Exclusions as outlined. The omission of any item(s) not listed in the assumed scope shall not be construed to be included in this pricing.

Base Building(s): DSA approved modular classroom building, steel rigid frame construction, Type V non-rated construction, 20 lb roof load, 50 + 15 lb floor load, 110 ULT wind load, 2013 CBC, Ss = 0.690, FOB Fresno.

(2) each 24x40 Standard Classroom Building	\$ 91,820	\$ 183,640
Per floor plan attached and refer to inclusions/exclusions list attached.		

Terms:

Monthly progress payment net 20 days. Quote good for 60 days.

Schedule:

Delivery available 120 days after DSA approval or October, whichever is later.

Attachments/Exhibits:

AMS floor plan dated 04/15/2008.

Thank you for the opportunity to provide our proposal. If accepted, please sign below accepting the standard terms and conditions of our Cooperative Purchasing Contract, and per the descriptions and pricing listed above.

Accepted By:

Central U.S.D.

Signature

Printed Name

Title

Date

DMS/rt

American Modular Systems

Signature

DANIEL M. SARICH
Printed Name

PRESIDENT
Title

2/21/18
Date

Inclusions:

Building Envelope:

- 2016 CBC
- Engineering & Design
- Standard delivery/Set-up
- Steel moment frame DSA PC design
- 20 ga galv. standing seam metal roof, standard 1/4:12 single slope to rear
- Reinforced wood floor system
- 2"x4" wall framing
- Standard wood foundation
- R-19 roof insulation, R-13 walls
- Tempered, dual glazed, bronze anodized non-operable aluminum framed windows as shown

Exterior:

- 18 ga exterior hollow metal door
- Welded door frames
- Duratemp T-1-11 type wood siding
- AMS Standard Dunn Edwards paint
- 5 ft. front overhangs, 2 ft. rear overhangs
- Non-enclosed soffits

Interior:

- 8' 6" suspended T-bar ceilings with 2'x4' ceiling tiles
- (2) 8'x4' white markerboards
- (2) each Classroom, Tall lockable storage cabinets
- AMS standard vinyl tack board interior wall covering over 1/2" gypboard
- AMS standard floor covering, 26oz. Patcraft carpet, rubber wall base

Mechanical:

- Wall mount electric HVAC system, single phase, (1) 4 ton unit
- Programmable T-Stats
- Standard ducted supply registers

Lighting, Electrical, Data:

- LED Interior lighting
- Occupancy sensors
- (1) AMS standard exterior light at each door
- Single phase interior wall electrical panel stubbed to outside
- All low voltage conduits in wall only stubbed to above ceiling

Additional Features/Items:

- Wall mounted fire extinguisher
- Standard Schlage door hardware
- Project/contract supervision
- One year warranty
- Sales tax

Exclusions:

General Specification, Fees, and Site Requirements:

- DSA approval, DSA plan fees, DSA inspection fees, DSA inplant/site inspection fees
- HCD fees, site inspections/approvals
- Architect fees
- Union Labor
- Builders Risk Insurance
- Site security to include the delivered buildings
- Airport proximity STC compliance
- Extreme climate zone HVAC coordination
- Solar option design/approval

Foundation, Foundation Prep:

- Concrete foundations, vent/access wells, drywells, foundation pit excavation, off-haul of spoils
- Foundation flashing
- Crane charges if necessary
- Surveying, site preparation/site improvements
- Plans showing grades, benchmarks, maintenance of benchmarks, setbacks, finish floor heights, etc.
- Adequate all weather vehicle/trades access to building pad
- Soils testing, soils reports
- Special handling due to inaccessible site conditions

Equipment and Devices:

- Fire alarm system
- Ramps/ramp transitions to grade
- Fire sprinklers/risers
- Exterior/interior drinking fountain

Electrical and Data:

- EMS systems, EMCS systems pathways and/or coordination
- Load monitoring provisions
- Low voltage systems, motion detectors, intrusion/security systems, cameras, keypads
- IDF cabinets, wires, devices or pathways, pull strings
- ALL Signage
- Projection screens, projectors, TV/monitor brackets, CCTV

Site, Final Connection, Drainage and Plumbing:

- Full time supervision
- Temporary power/water/phone, job trailer, fencing, internet
- Dust control, project debris bin
- SWPPP
- Security, portable toilets, dumpster, storage
- Sidewalks, flatwork, curbs, mow strips, landscaping
- Utilities/connections
- RWL connections to underground

Central USD

East HS

(1/19/18)

Miscellaneous:

- Sealing/waxing of finish floor coverings, walk-off mats at entry doors
- Epoxy grouts, grout sealers
- Window coverings, security screens, window/building awnings, side overhangs
- Appliances, furniture, soap/paper dispensers, hand dryers, changing tables, feminine hygiene dispensers
- Master keying
- Rated walls
- Air balance reports/testing
- Water chlorination

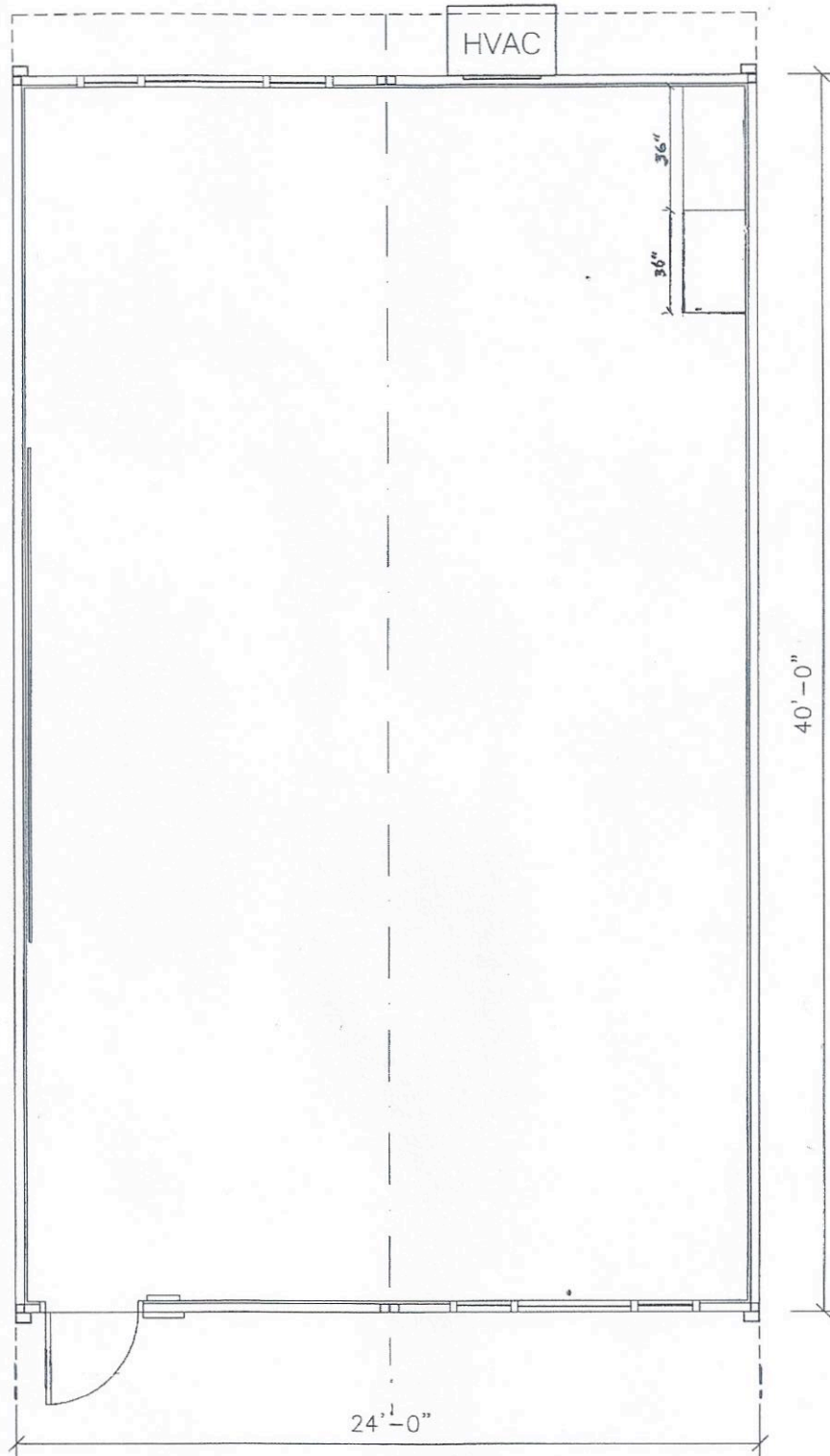
Special Notes:

District must provide a truck accessible level/compacted prepared pad. The pad shall be a maximum of 6" from grade level measured diagonally along long axis. All sites exceeding 6" shall be charged on a site-by-site basis.

Concrete Foundation Exclusions – foundation flashing, site demolition, foundation pad excavation, import/export soils, surveying, site improvements, underground hazards, crawl space drainage, dry wells, slurry seal, backfilling/compaction, unforeseen conditions

AMS does not have the following included in our scope as listed above per the new requirements in 2013 CBC: exterior lighting back-up battery load monitoring provisions, EMCS systems pathways and/or coordination, airport proximity STC compliance, extreme climate zone HVAC coordination and solar option design/approval. AMS provides non-operable windows as standard for all projects unless otherwise coordinated.

The omission of any item(s) not listed in the assumed scope and/or exclusions shall not be construed to be included in this pricing. All projects per AMS standard PC guidelines, manufacturing methods, finishes and fixtures. AMS does not include direction and/or design for options not included in our scope unless otherwise stated or coordinated prior.



American Modular Systems Inc.
 787 Spreckels Ave. Manteca, CA 95336
 (209)825-1921 Fax (209)825-7018
 americanmodular.com

24'X40' CENTRAL TYPE 'A'

DATE: 04/15/2008

BUILDING SQ.FT. 960

DRAWN BY: TH

NOTES:



Project Cost Summary

February 21, 2018

To: Bert Contreras
Central Unified School District
Email: hcontreras@centralusd.k12.ca.us

From: Dan Sarich
Subject: (2) East HS 24x40 DSA Classrooms

Message: The following is a summary breakdown of the 24x40 DSA classroom buildings based upon the Santa Rita Facilities Services piggyback Contract:

Project: East High School

<u>Line Item</u>	<u>Qty</u>	<u>Description</u>	<u>Unit Price</u>	<u>Extension</u>
11	2 ea	24x40 Classrooms	\$ 88,260	\$ 176,520
104	4 ea	Tall lockable Teacher Cabinet	\$ 1,780	\$ 7,120
			Total	\$ 183,640



Revised: February 21, 2018
February 19, 2018

Central USD
4200 N. Grantland Ave.
Fresno, CA 93723

Re: 24x40 DSA Classroom
Central West HS

Attn: Hilbert Contreras
Director Operational Services

American Modular Systems is pleased to provide our proposal for the 24x40 DSA Classroom. Our pricing is based upon the floor plan attached to this proposal for reference.

Central USD is utilizing the provisions of the Santa Rita Union School District Facility Services Contract and the scope of work as listed below, and in the Inclusions and Exclusions as outlined. The omission of any item(s) not listed in the assumed scope shall not be construed to be included in this pricing.

Base Building(s): DSA approved modular classroom buildings, steel rigid frame construction, Type V non-rated construction, 20 lb roof load, 50 lb floor load, 110 ULT wind load, 2016 CBC, Ss = 0.740, FOB Fresno.

(1) each 24x40 DSA Classroom building, Type A Layout \$ 91,820
Per floor plan attached and refer to inclusions/exclusions list attached.

Terms:

Monthly progress payment net 20 days. Quote good for 60 days.

Schedule:

Delivery available 120 days after DSA approval or October 2018 whichever is later.

Attachments/Exhibits:

AMS floor plan dated 04/15/2008.

Thank you for the opportunity to provide our proposal. If accepted, please sign below accepting the standard terms and conditions of our Cooperative Purchasing Contract, and per the descriptions and pricing listed above.

Accepted By:

Central USD

Signature

Printed Name

Title

Date

DMS/rt

American Modular Systems

Signature

DANIEL M. SARICH

Printed Name

PRESIDENT

Title

2/21/18

Date

Inclusions:

Building Envelope:

- 2016 CBC
- Engineering & Design
- Standard delivery/Set-up
- Steel moment frame DSA PC design
- 20 ga galv. standing seam metal roof, standard ¼:12 single slope to rear
- Reinforced wood floor system
- 2"x4" wall framing
- Standard wood foundation
- R-19 roof insulation, R-13 walls
- Tempered, dual glazed, bronze anodized non-operable aluminum framed windows as shown

Exterior:

- 18 ga exterior hollow metal door
- Welded door frame
- Duratemp T-1-11 type wood siding
- AMS Standard Dunn Edwards paint
- 5 ft. front overhangs, 2 ft. rear overhangs
- Non-enclosed soffits

Interior:

- 8' 6" suspended T-bar ceilings with 2'x4' ceiling tiles
- (2) 8'x4' white markerboards
- (2) each Classroom, Tall lockable storage cabinets
- AMS standard vinyl tack board interior wall covering over ½" gypboard
- AMS standard floor covering, 26oz. Patcraft carpet, rubber wall base

Mechanical:

- Wall mount electric HVAC system, single phase, (1) 4 ton unit
- Programmable T-Stats
- Standard ducted supply registers

Lighting, Electrical, Data:

- LED Interior lighting
- Occupancy sensors
- (1) AMS standard exterior light at each door
- Single phase interior wall electrical panel stubbed to outside
- All low voltage conduits in wall only stubbed to above ceiling

Additional Features/Items:

- Wall mounted fire extinguisher
- Standard Schlage door hardware
- Project/contract supervision
- One year warranty
- Sales tax

Exclusions:

General Specification, Fees, and Site Requirements:

- DSA approval, DSA plan fees, DSA inspection fees, DSA inplant/site inspection fees
- HCD fees, site inspections/approvals
- Architect fees
- Union Labor
- Builders Risk Insurance
- Site security to include the delivered buildings
- Airport proximity STC compliance
- Extreme climate zone HVAC coordination
- Solar option design/approval

Foundation, Foundation Prep:

- Concrete foundations, vent/access wells, drywells, foundation pit excavation, off-haul of spoils
- Foundation flashing
- Crane charges if necessary
- Surveying, site preparation/site improvements
- Plans showing grades, benchmarks, maintenance of benchmarks, setbacks, finish floor heights, etc.
- Adequate all weather vehicle/trades access to building pad
- Soils testing, soils reports
- Special handling due to inaccessible site conditions

Equipment and Devices:

- Fire alarm system
- Ramps/ramp transitions to grade
- Fire sprinklers/risers
- Exterior/interior drinking fountain

Electrical and Data:

- EMS systems, EMCS systems pathways and/or coordination
- Load monitoring provisions
- Low voltage systems, motion detectors, intrusion/security systems, cameras, keypads
- IDF cabinets, wires, devices or pathways, pull strings
- ALL Signage
- Projection screens, projectors, TV/monitor brackets, CCTV

Site, Final Connection, Drainage and Plumbing:

- Full time supervision
- Temporary power/water/phone, job trailer, fencing, internet
- Dust control, project debris bin
- SWPPP
- Security, portable toilets, dumpster, storage
- Sidewalks, flatwork, curbs, mow strips, landscaping
- Utilities/connections
- RWL connections to underground

Miscellaneous:

- Sealing/waxing of finish floor coverings, walk-off mats at entry doors
- Epoxy grouts, grout sealers
- Window coverings, security screens, window/building awnings, side overhangs
- Appliances, furniture, soap/paper dispensers, hand dryers, changing tables, feminine hygiene dispensers
- Master keying
- Rated walls
- Air balance reports/testing
- Water chlorination

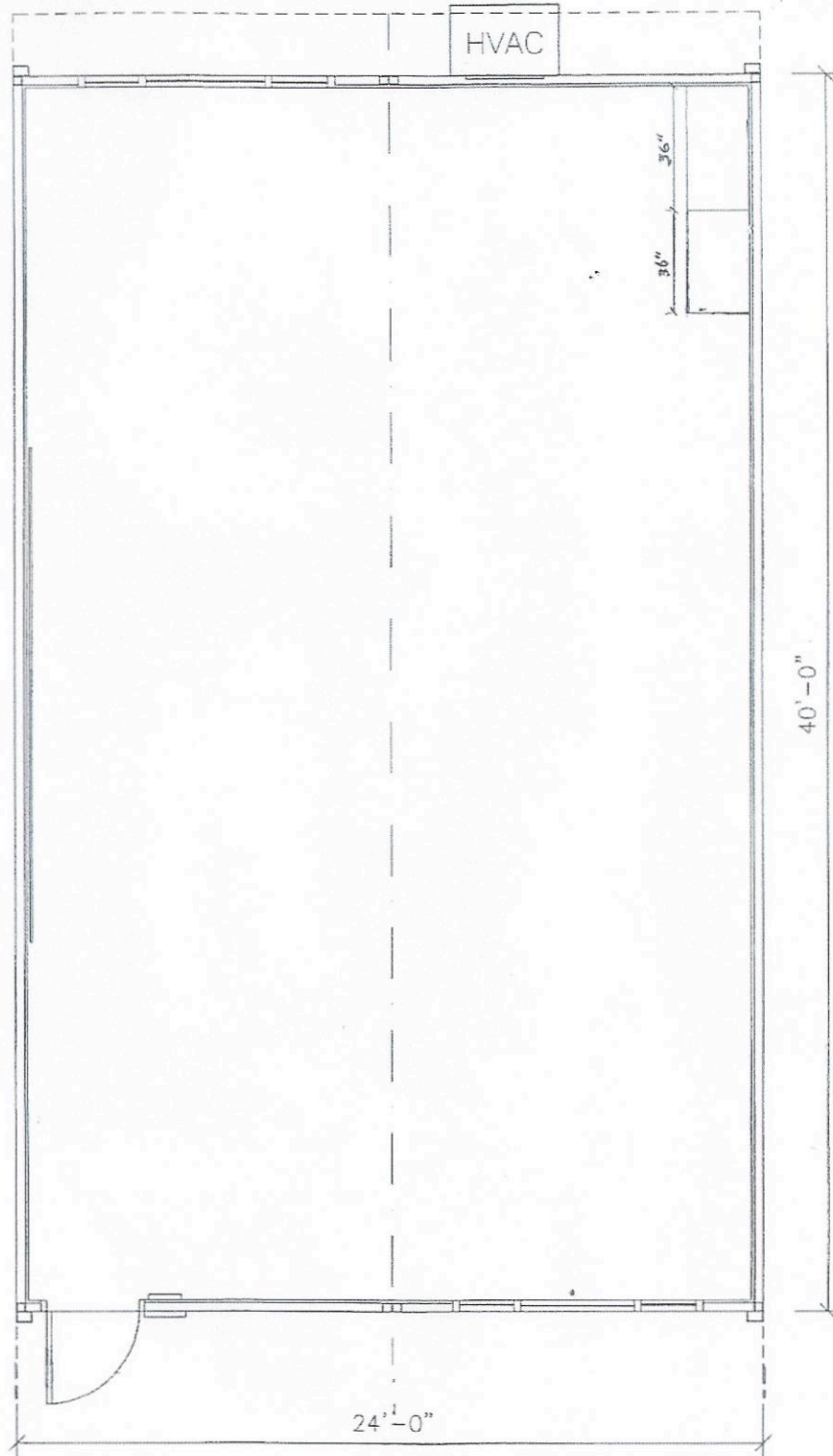
Special Notes:

District must provide a truck accessible level/compacted prepared pad. The pad shall be a maximum of 6" from grade level measured diagonally along long axis. All sites exceeding 6" shall be charged on a site-by-site basis.

Concrete Foundation Exclusions – foundation flashing, site demolition, foundation pad excavation, import/export soils, surveying, site improvements, underground hazards, crawl space drainage, dry wells, slurry seal, backfilling/compaction, unforeseen conditions

AMS does not have the following included in our scope as listed above per the new requirements in 2013 CBC: exterior lighting back-up battery load monitoring provisions, EMCS systems pathways and/or coordination, airport proximity STC compliance, extreme climate zone HVAC coordination and solar option design/approval. AMS provides non-operable windows as standard for all projects unless otherwise coordinated.

The omission of any item(s) not listed in the assumed scope and/or exclusions shall not be construed to be included in this pricing. All projects per AMS standard PC guidelines, manufacturing methods, finishes and fixtures. AMS does not include direction and/or design for options not included in our scope unless otherwise stated or coordinated prior.



American Modular Systems Inc.
 787 Spreckels Ave. Manteca, CA 95336
 (209)825-1921 Fax (209)825-7018
americanmodular.com

24'X40' CENTRAL TYPE 'A'

DATE: 04/15/2008

BUILDING SQ.FT. 960

DRAWN BY: TH

NOTES:



Project Cost Summary

February 21, 2018

To: Hilbert Contreras
Central Unified School District
Email: hcontreras@centralusd.k12.ca.us

From: Dan Sarich
Subject: West HS DSA Classroom Building

Message: The following is a summary breakdown of the 24x40 DSA classroom building based upon the Santa Rita Facilities Services piggyback Contract:

Project: Example

<u>Line Item</u>	<u>Qty</u>	<u>Description</u>	<u>Unit Price</u>	<u>Extension</u>
11	1 ea	24x40 Classroom	\$ 88,260	\$ 88,260
104	2 ea	Tall lockable Teacher Cabinet	\$ 1,780	\$ 3,560
			Total	\$ 91,820



February 19, 2018

Central USD
4200 N. Grantland Ave.
Fresno, CA 93723

Re: 24x40 DSA Classrooms
Polk

Attn: Hilbert Contreras
Director Operational Services

American Modular Systems is pleased to provide our proposal for the 24x40 DSA Classrooms. Our pricing is based upon the floor plan attached to this proposal for reference.

Central USD is utilizing the provisions of the Santa Rita Union School District Facility Services Contract and the scope of work as listed below, and in the Inclusions and Exclusions as outlined. The omission of any item(s) not listed in the assumed scope shall not be construed to be included in this pricing.

Base Building(s): DSA approved modular classroom buildings, steel rigid frame construction, Type V non-rated construction, 20 lb roof load, 50 lb floor load, 110 ULT wind load, 2016 CBC, Ss = 0.740, FOB Fresno.

(3) each 24x40 DSA Classroom buildings, Type A Layout \$ 91,820 \$ 275,460
Per floor plan attached and refer to inclusions/exclusions list attached.

Terms:
Monthly progress payment net 20 days. Quote good for 60 days.

Schedule:
Delivery available 120 days after DSA approval or October 2018 whichever is later.

Attachments/Exhibits:

AMS floor plan dated 04/15/2008.

Thank you for the opportunity to provide our proposal. If accepted, please sign below accepting the standard terms and conditions of our Cooperative Purchasing Contract, and per the descriptions and pricing listed above.

Accepted By:

Central USD

Signature

Printed Name

Title

Date

DMS/rt

American Modular Systems

Signature

DANIEL M. SARICH
Printed Name

PRESIDENT
Title

2/19/18
Date

Inclusions:

Building Envelope:

- 2016 CBC
- Engineering & Design
- Standard delivery/Set-up
- Steel moment frame DSA PC design
- 20 ga galv. standing seam metal roof, standard ¼:12 single slope to rear
- Reinforced wood floor system
- 2"x4" wall framing
- Standard wood foundation
- R-19 roof insulation, R-13 walls
- Tempered, dual glazed, bronze anodized non-operable aluminum framed windows as shown

Exterior:

- 18 ga exterior hollow metal door
- Welded door frames
- Duratemp T-1-11 type wood siding
- AMS Standard Dunn Edwards paint
- 5 ft. front overhangs, 2 ft. rear overhangs
- Non-enclosed soffits

Interior:

- 8' 6" suspended T-bar ceilings with 2'x4' ceiling tiles
- (2) 8'x4' white markerboards
- (2) each Classroom, Tall lockable storage cabinets
- AMS standard vinyl tack board interior wall covering over ½" gypboard
- AMS standard floor covering, 26oz. Patcraft carpet, rubber wall base

Mechanical:

- Wall mount electric HVAC system, single phase, (1) 4 ton unit
- Programmable T-Stats
- Standard ducted supply registers

Lighting, Electrical, Data:

- LED Interior lighting
- Occupancy sensors
- (1) AMS standard exterior light at each door
- Single phase interior wall electrical panel stubbed to outside
- All low voltage conduits in wall only stubbed to above ceiling

Additional Features/Items:

- Wall mounted fire extinguisher
- Standard Schlage door hardware
- Project/contract supervision
- One year warranty
- Sales tax

General Specification, Fees, and Site Requirements:

- DSA approval, DSA plan fees, DSA inspection fees, DSA implant/site inspection fees
- HCD fees, site inspections/approvals
- Architect fees
- Union Labor
- Builders Risk Insurance
- Site security to include the delivered buildings
- Airport proximity STC compliance
- Extreme climate zone HVAC coordination
- Solar option design/approval

Foundation, Foundation Prep:

- Concrete foundations, vent/access wells, drywells, foundation pit excavation, off-haul of spoils
- Foundation flashing
- Crane charges if necessary
- Surveying, site preparation/site improvements
- Plans showing grades, benchmarks, maintenance of benchmarks, setbacks, finish floor heights, etc.
- Adequate all weather vehicle/trades access to building pad
- Soils testing, soils reports
- Special handling due to inaccessible site conditions

Equipment and Devices:

- Fire alarm system
- Ramps/ramp transitions to grade
- Fire sprinklers/risers
- Exterior/interior drinking fountain

Electrical and Data:

- EMS systems, EMCS systems pathways and/or coordination
- Load monitoring provisions
- Low voltage systems, motion detectors, intrusion/security systems, cameras, keypads
- IDF cabinets, wires, devices or pathways, pull strings
- ALL Signage
- Projection screens, projectors, TV/monitor brackets, CCTV

Site, Final Connection, Drainage and Plumbing:

- Full time supervision
- Temporary power/water/phone, job trailer, fencing, internet
- Dust control, project debris bin
- SWPPP
- Security, portable toilets, dumpster, storage
- Sidewalks, flatwork, curbs, mow strips, landscaping
- Utilities/connections
- RWL connections to underground

Miscellaneous:

- Sealing/waxing of finish floor coverings, walk-off mats at entry doors
- Epoxy grouts, grout sealers
- Window coverings, security screens, window/building awnings, side overhangs
- Appliances, furniture, soap/paper dispensers, hand dryers, changing tables, feminine hygiene dispensers
- Master keying
- Rated walls
- Air balance reports/testing
- Water chlorination

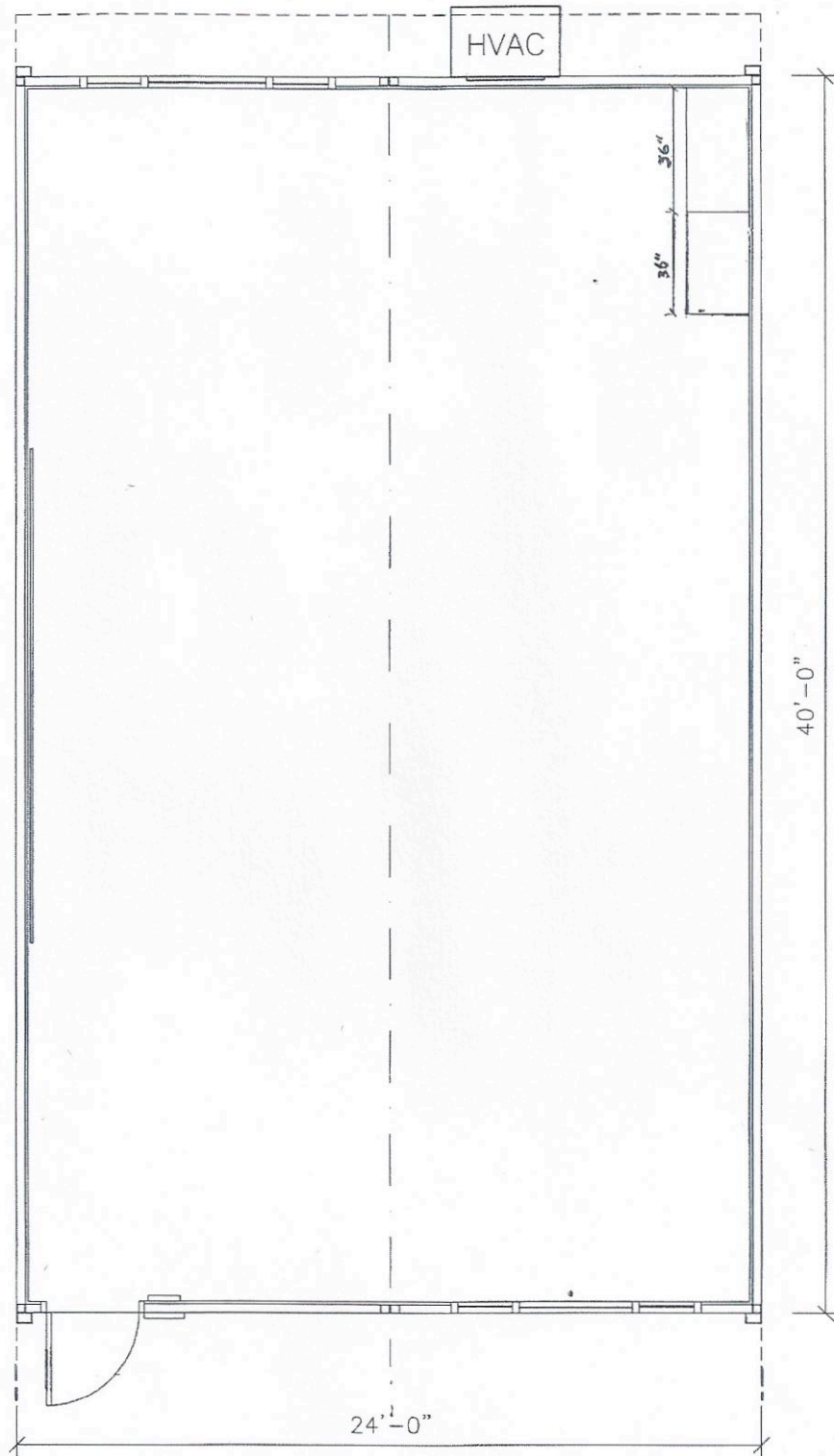
Special Notes:

District must provide a truck accessible level/compacted prepared pad. The pad shall be a maximum of 6" from grade level measured diagonally along long axis. All sites exceeding 6" shall be charged on a site-by-site basis.

Concrete Foundation Exclusions – foundation flashing, site demolition, foundation pad excavation, import/export soils, surveying, site improvements, underground hazards, crawl space drainage, dry wells, slurry seal, backfilling/compaction, unforeseen conditions

AMS does not have the following included in our scope as listed above per the new requirements in 2013 CBC: exterior lighting back-up battery load monitoring provisions, EMCS systems pathways and/or coordination, airport proximity STC compliance, extreme climate zone HVAC coordination and solar option design/approval. AMS provides non-operable windows as standard for all projects unless otherwise coordinated.

The omission of any item(s) not listed in the assumed scope and/or exclusions shall not be construed to be included in this pricing. All projects per AMS standard PC guidelines, manufacturing methods, finishes and fixtures. AMS does not include direction and/or design for options not included in our scope unless otherwise stated or coordinated prior.



American Modular Systems Inc.
 787 Spreckels Ave. Manteca, CA 95336
 (209)825-1921 Fax (209)825-7018
 americanmodular.com

24'X40' CENTRAL TYPE 'A'

DATE: 04/15/2008

BUILDING SQ.FT. 960

DRAWN BY: TH

NOTES:



Project Cost Summary

February 21, 2018

To: Bert Contreras
Central Unified School District
Email: hcontreras@centralusd.k12.ca.us

From: Dan Sarich
Subject: (3) Polk 24x40 DSA Classrooms

Message: The following is a summary breakdown of the 24x40 DSA classroom buildings based upon the Santa Rita Facilities Services piggyback Contract:

Project: East High School

<u>Line Item</u>	<u>Qty</u>	<u>Description</u>	<u>Unit Price</u>	<u>Extension</u>
11	3 ea	24x40 Classrooms	\$ 88,260	\$ 264,780
104	6 ea	Tall lockable Teacher Cabinet	\$ 1,780	\$ 10,680
			Total	\$ 275,460