

Augustus Academy

For Creative Arts & Technology



Our Mission

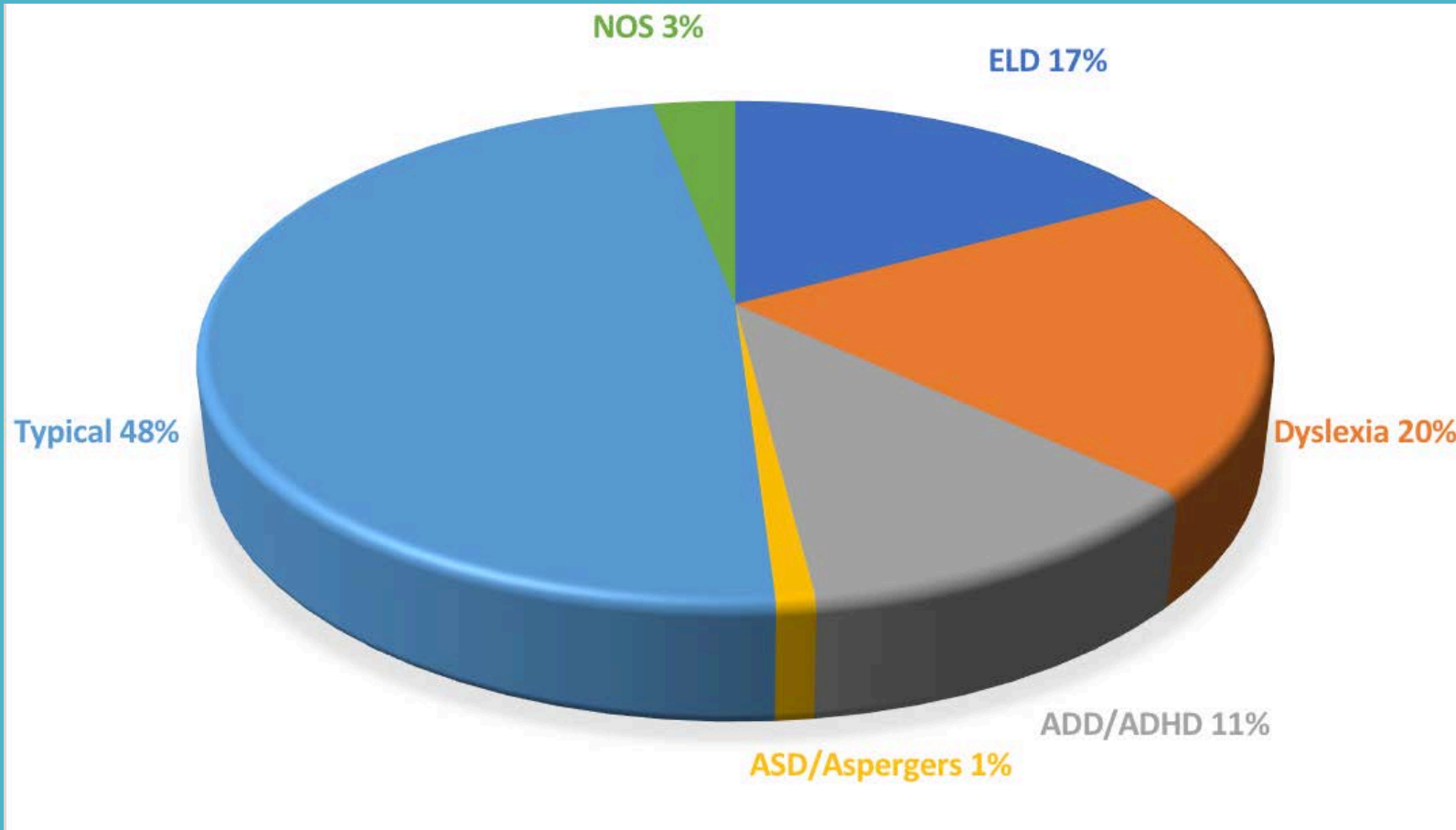
Augustus Academy for Creative Arts and Technology will forge capable, innovative, problem solving Doers, “Mavericks” to effectively be catalysts of positive growth and change for their own generation and each individual our Students have the opportunity to effect.



What Makes Augustus Unique?

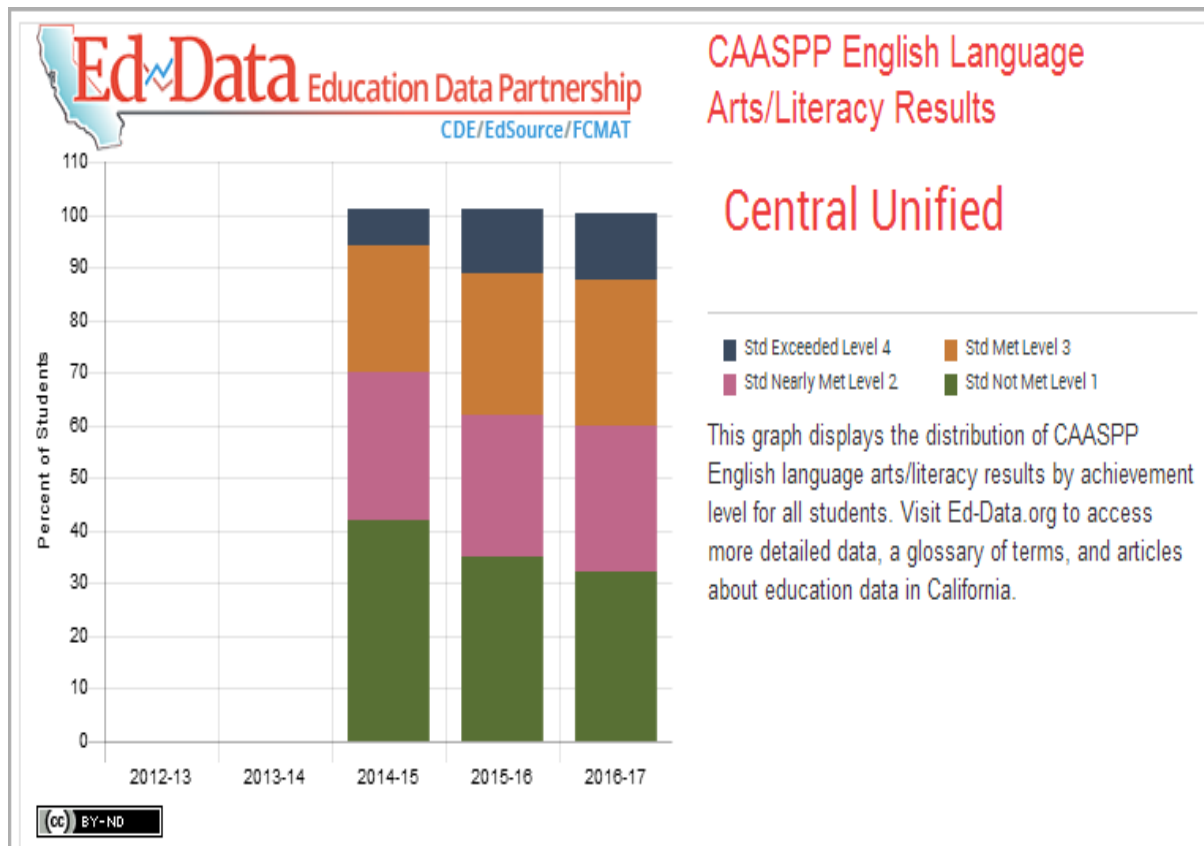
We don't intend to provide "equal" opportunity for students, but rather EVERY opportunity.

Typical Public School Classroom

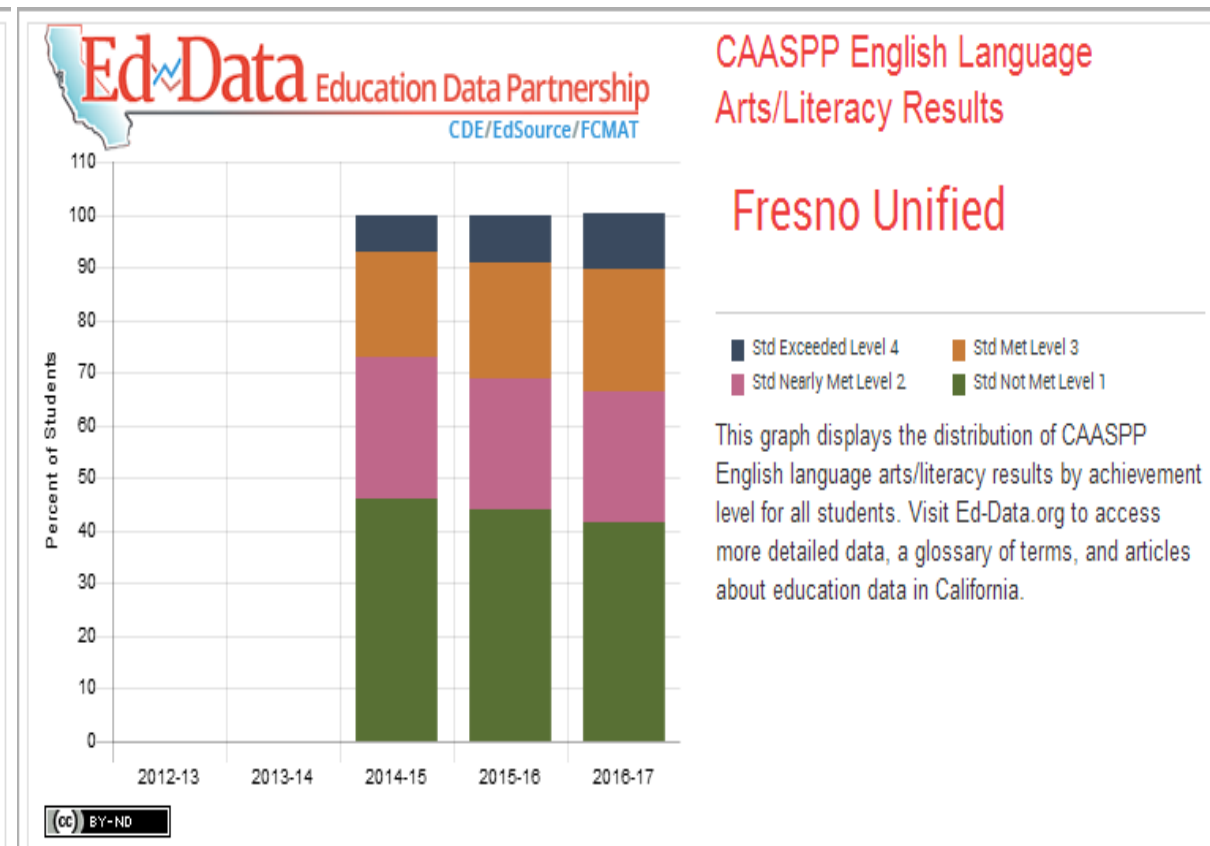


52% of a typical
public school
classroom...

isn't "typical"...

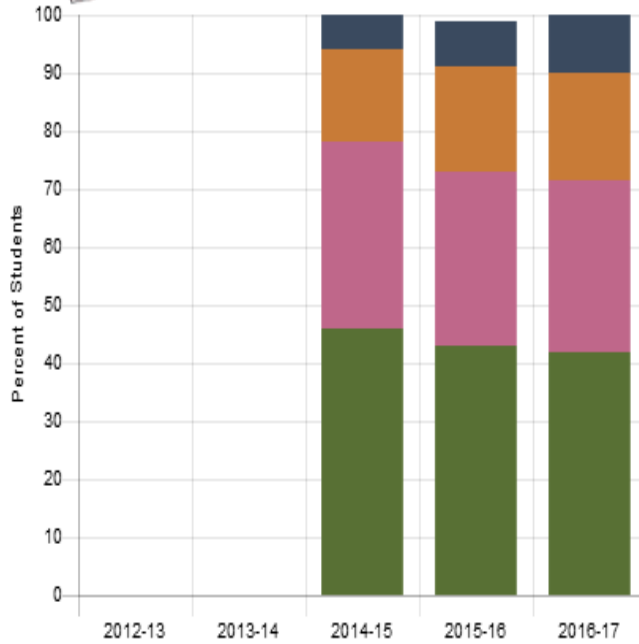


Level 1 & 2 = 59.7%



Level 1 & 2 = 66.4%

Language Arts/Literacy Results 2016-17
Fresno County

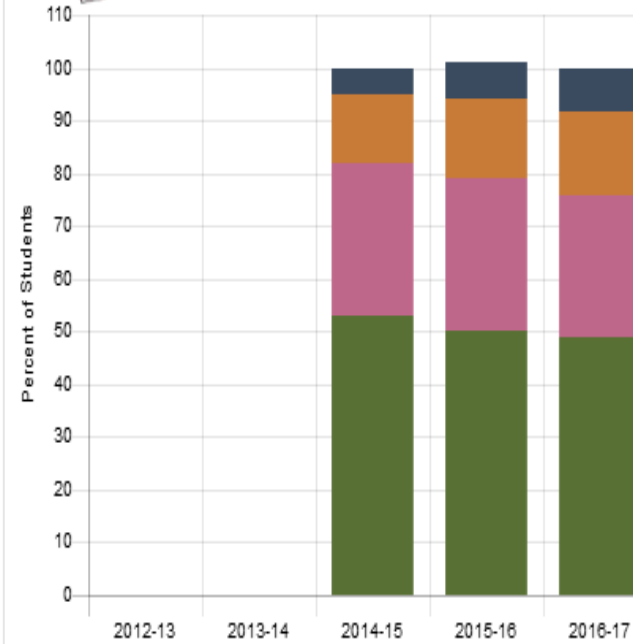


CAASPP Mathematics Results

Central Unified

This graph displays the distribution of CAASPP Mathematics results by achievement level for all students. Visit Ed-Data.org to access more detailed data, a glossary of terms, and articles about education data in California.

Level 1 & 2 = 71.5%



CAASPP Mathematics Results

Fresno Unified

This graph displays the distribution of CAASPP Mathematics results by achievement level for all students. Visit Ed-Data.org to access more detailed data, a glossary of terms, and articles about education data in California.

Level 1 & 2 = 75.8%

Mathematics Results 2016-17
Fresno County

Let's Look at the Differences...

Dyslexia

ADD/ADHD

ASD/Asperger's

NOS (Not Otherwise Specified)

Dysgraphia, Dyscalculia, OCD, ODD, etc.

What is Dyslexia?

A language-processing disorder that also impacts directionality and the ability to memorize random facts.

Dyslexia (It's Greek)

- Dys = difficulty with
- Lexia = language

Difficulty with Language:

- Oral Speech
- Auditory Processing
- Reading
- Written Expression and Spelling

Dyslexia

Often accompanied by:

Dysgraphia

Dyscalculia

Dysnomia

What we know about Dyslexia...

100% Hereditary

20-25% of the Entire World Population

Classroom of 30

5-6 Dyslexic Students

Physical Difference is the Brain:

10% Larger Right Hemisphere

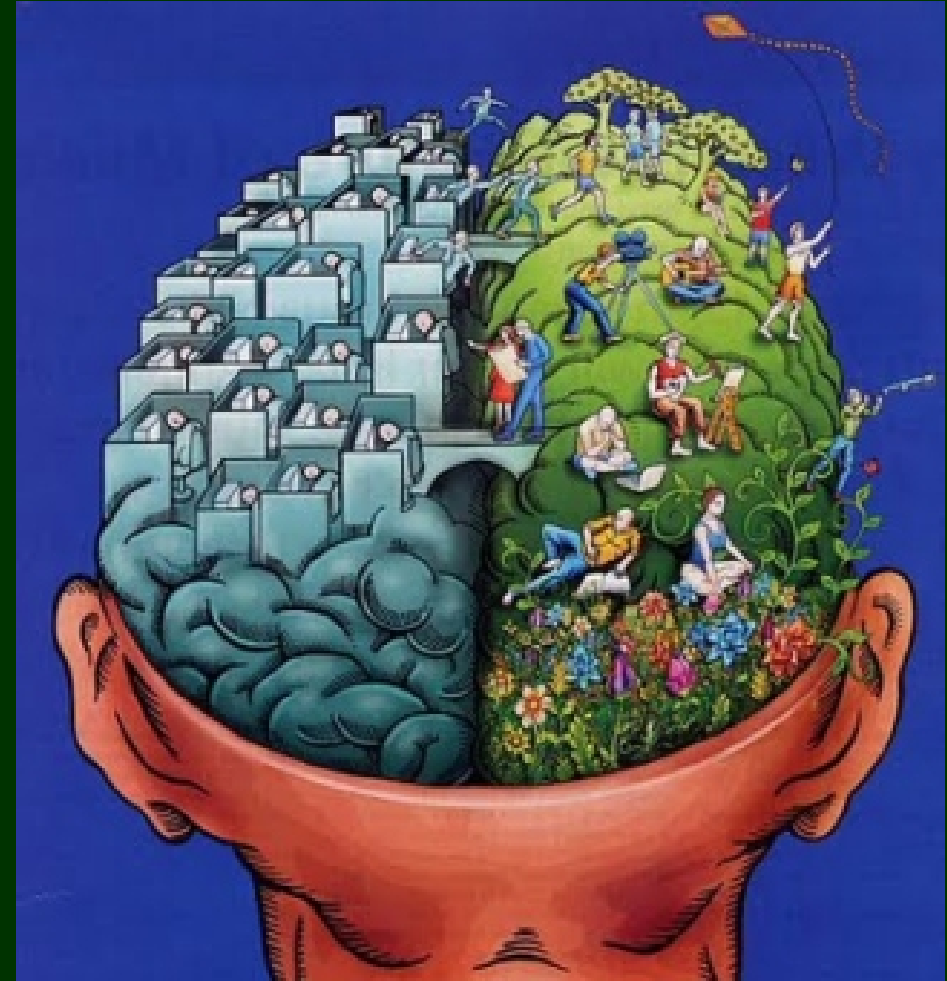
Spaghetti like Ectopia Tissue*

Gene Tracking:

Chromosome 3, 6 & 15 (possibly 2 more)

Think, Process & Perform Differently

Most Researched Academic Challenge*



Let's Look at the Differences...

Dyslexia

ADD/ADHD

ASD/Asperger's

NOS (Not Otherwise Specified)

Dysgraphia, Dyscalculia, OCD, ODD, etc.

What is ADD/ADHD?

Attention-deficit/hyperactivity disorder (ADHD) is a brain disorder marked by an ongoing pattern of inattention and/or hyperactivity-impulsivity that interferes with functioning or development.

Difficulty with:

- Staying on-task
- Staying still: excessively fidgets, taps, or talks
- Making hasty actions that occur in the moment without first thinking about them

ADD/ADHD

Often accompanied by:

Dysgraphia

Dyslexia

Impulsivity Issues

What is ASD, etc.?

Children on the autism spectrum may have trouble understanding or communicating their needs to teachers and fellow students. They can have difficulty understanding some classroom directions and instruction, along with subtle vocal and facial cues of teachers.

Difficulty with:

- Staying on-task
- Staying still: excessively fidgets, taps, or talks
- Social Interaction with peers

ASD/Asperger's & Others

Social interaction

Imaginative or creative
play

Sensory processing.

Accommodated Instructional Design

Every Student:

- assessed for Language Arts Proficiency Level
- assessed for Mathematical Proficiency Level
- is represented through weekly data-driven real time immediate adjustments ensuring students are on track or demonstrating growth

Every Student:

- will participate in learning pods geared to his or her LA & Math Proficiency Levels
- will be looked at as an INDIVIDUAL within the Augustus Community

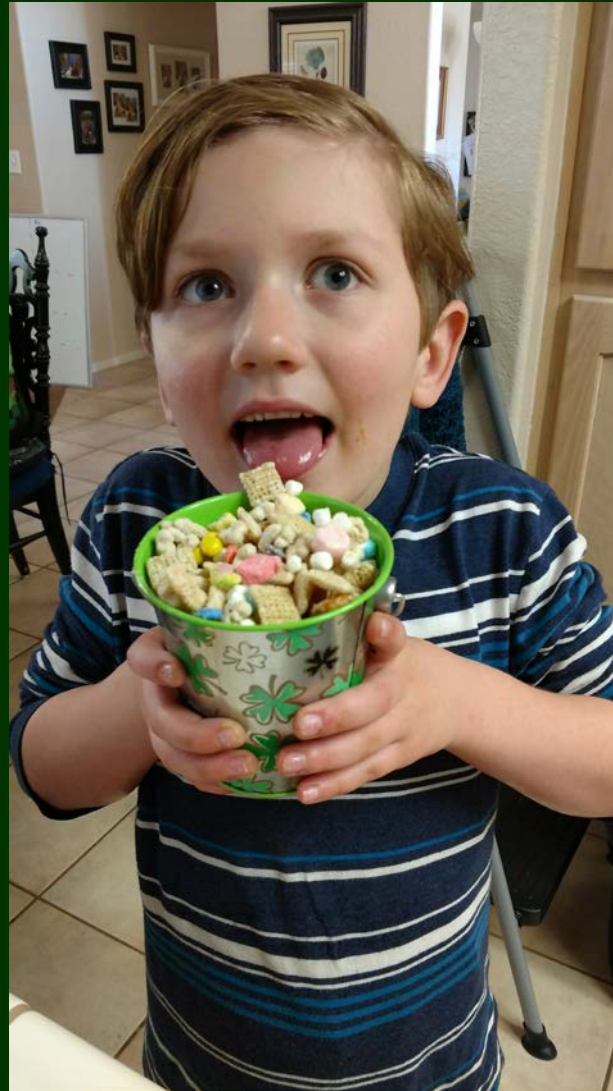


Jayce

8 years old

Difficulties with:

- Reading
- Writing
 - Composition
 - Mechanics
- Spelling
- Speech
 - Speech Services
- Staying on-task
- Staying still: excessively fidgets or moves



Jayce 8yrs Accommodated Instructional Design			
Time/Day	Monday/ Wednesday	Tuesday/ Thursday	Friday
8:15	Leadership & Team Building	Leadership & Team Building	Leadership & Team Building
8:30	Bravo 1 Math Learning Pod	Barton R&S One-on-One	Research & Writing
9:00	Literature	ST Math	Robotic STEM
9:30	ST Math	Writing/Composition/Keyboarding	Public Speaking/Presentation
10:00	Writing/Composition/Keyboarding	Bravo 1 Math Learning Pod	KickBoxing/Break
10:30	Barton Learning Pod	Literature	Research & Writing
11:00	Lunch Playground	Lunch Playground	Home Ec/Cooking
11:45	UA/ELA	UA/ELA	Public Speaking/Presentation
12:15	History	STEM	Community Lunch Playground
1:15	Break Time	Break Time	Dismissal
1:30	Google Apps	American Sign Language	
2:15	Public Speaking/Presentations	Public Speaking/Presentations	
2:45 3:15	KickBoxing Mav Gym	MineCraft Dev/Build	

Paige 14 years old

Difficulties with:

- Reading
- Writing
 - Composition
- Spelling
- Math
 - Word Problems
 - Formulas
- Staying on-task
- Staying still: excessively fidgets or moves



Paige 14yrs					
Accommodated Instructional Design					
Time/Day	Monday	Tuesday	Wednesday	Thursday	Friday
8:15	Optional Day for High School Students (However, they are welcome to be on campus and we encourage them to join us)	Leadership & Team Building	Leadership & Team Building	Leadership & Team Building	Leadership & Team Building
8:30		Core Math	Core Language Arts	Core Math	Research & Writing Home Ec/Cooking
9:30		US History	Core Math	US History	STEM
10:30		Core Language Arts	US History	Core Language Arts	Adobe Creative Cloud Applications
11:30		UA/ELA	UA/ELA	UA/ELA	UA/ELA
12:00	Mondays Select HS Students will access Barton Reading & Spelling Online.	Lunch	Lunch	Lunch	Kickboxing/ Self Defense
12:30		Forensics Science Access	Forensics Science Access	Forensics Science Access	Lunch
1:00		Public Speaking/Presentations	Public Speaking/Presentations	Public Speaking/Presentations	Dismissal
1:30		CAD	Adobe Creative Cloud Applications	CAD	
2:00		Break	Break	Break	
2:45 3:15		American Sign Language	American Sign Language	American Sign Language	

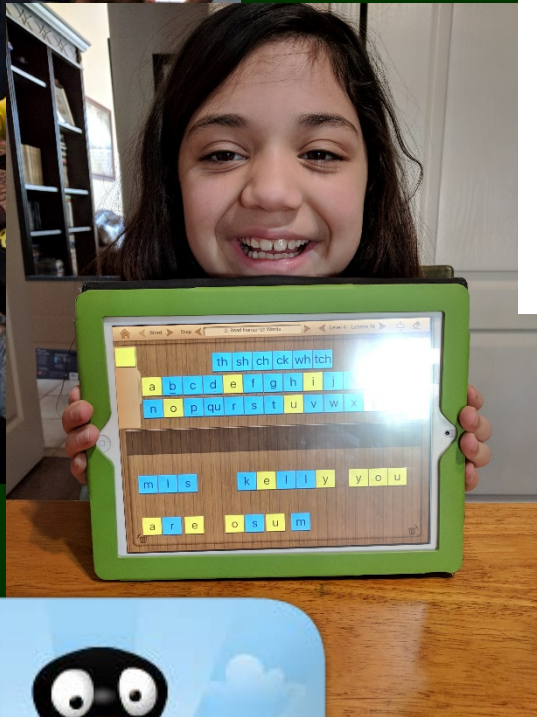
Environmental Accommodations

Seating

Manipulatives

Keyboarding vs writing

Listenbrary



Augustus Academy Founding Team & Board Members

Member	Augustus Academy Board	Curriculum, Instruction, Assessment, Student Services	School Administration	Finances	Project Management, Strategic Planning	Business & Financial Management	Facilities & Real Estate	Fundraising, Grant Writing, Donor Relations	Governance, Law, Compliance	Community Outreach, Communications
English		X	X		X	X		X		X
Ellsworth		X				X	X			X
Barton		X							X	
Cameron	X				X	X			X	
Foster	X				X					X
Futtermann		X							X	
Gilger		X			X			X		X
Gostanian					X		X		X	
Valdivia	X	X				X				
Weaver-Adams	X				X	X	X	X		X
Winters	X						X			X

A New School of Choice for Central Unified Families & Students



Thank you

