


| SYSTEM DESCRIPTION | |
|--------------------------|------------------------------|
| MODULE TYPE | Longi LR6_72HPH_380M |
| QUANTITY | 1404 |
| INVERTERS | (5) PVI 60TL (4) PVI 36TL |
| SYSTEM SIZE (DC) | 533.52 kW |
| SYSTEM SIZE (AC) | 444.00 kW |
| LAT/LONG | 36.7655;-119.8715 |
| AZIMUTH ANGLE | 270°;180° |
| TILT ANGLE | 7° |
| SNOWLOAD | 0 PSF |
| WINDSPEED | 110 MPH |
| SEISMIC CATEGORY | C |
| NO.OF TREES/LIGHTP | 12/3 |
| TOTAL ADA SPACES/COVERED | 5/1 |

NOTE: DESKTOP ANALYSIS OF TOPOGRAPHY AND TREE HEIGHTS WERE ASSUMED FOR THE DESIGNS. FINAL SYSTEM SIZE AND LOCATION WILL VARY BASED ON FURTHER DILIGENCE

CANOPY BLOCK DETAILS
10 STRING CANOPY BLOCK : 4
6 STRING CANOPY BLOCKS: 0
7 STRING CANOPY BLOCKS: 4

STANDARD CANOPY HEIGHT IS 10'0"
EXCEPT FOR THE ONE MARKED, WHERE THE HEIGHT IS AT 13'6"





FOREFRONT POWER

2017 FOREFRONT POWER, LLC AND ITS AFFILIATES ALL RIGHTS RESERVED

100 MONTGOMERY STREET #1400
SAN FRANCISCO, CA 94104
(855) 204-5083
www.ForeFrontPower.com

STAMP:

NOT FOR CONSTRUCTION

**CENTRAL USD
McKINLEY ES**

4444 W. McKINLEY AVE
FRESNO, CA

PROJECT NUMBER:
CA-14-0824

SHEET TITLE:
CONCEPTUAL LAYOUT

SHEET SIZE:
TABLOID 11" X 17"

THIS DRAWING IS THE PROPERTY OF FOREFRONT POWER, LLC. THIS INFORMATION IS CONFIDENTIAL AND IS TO BE USED ONLY IN CONNECTION WITH WORK DESCRIBED BY FOREFRONT POWER, LLC. NO PART IS TO BE DISCLOSED TO OTHERS WITHOUT WRITTEN PERMISSION FROM FOREFRONT POWER, LLC.

| NO. | REVISION | DATE | INIT. |
|-----|----------|------|-------|
| | | | |
| | | | |
| | | | |
| | | | |

DATE: 14-Jan-2019

DRAWN BY: RP

ENGINEER: RP

APPROVED BY:

PROJECT PHASE:
PRELIMINARY DESIGN

SCALE: 1" : 100'

SHEET NO:

CL-1


| SYSTEM DESCRIPTION | |
|--------------------------|--|
| MODULE TYPE | Longi LR6_72HPH_380M |
| QUANTITY | 792 |
| INVERTERS | (2) PVI 60TL (3) PVI 36TL (1) PVI 28TL |
| SYSTEM SIZE (DC) | 300.96 kW |
| SYSTEM SIZE (AC) | 285.00 kW |
| LAT/LONG | 36.7889;-119.8752 |
| AZIMUTH ANGLE | 270°; 180° |
| TILT ANGLE | 7° |
| SNOWLOAD | 0 PSF |
| WINDSPEED | 110 MPH |
| SEISMIC CATEGORY | B |
| NO.OF TREES/LIGHTP | 12/5 |
| TOTAL ADA SPACES/COVERED | 5/4 |

NOTE: DESKTOP ANALYSIS OF TOPOGRAPHY AND TREE HEIGHTS WERE ASSUMED FOR THE DESIGNS. FINAL SYSTEM SIZE AND LOCATION WILL VARY BASED ON FURTHER DILIGENCE

CANOPY BLOCK DETAILS
10 STRING CANOPY BLOCK : 2
6 STRING CANOPY BLOCKS: 2
7 STRING CANOPY BLOCKS: 1
5 STRING CANOPY BLOCKS: 1

STANDARD CANOPY HEIGHT IS 10'0"
UNLESS OTHERWISE SPECIFIED





**FOREFRONT
POWER**

2017 FOREFRONT POWER, LLC AND ITS
AFFILIATES ALL RIGHTS RESERVED

100 MONTGOMERY STREET #1400
SAN FRANCISCO, CA 94104
(855) 204-5083
www.ForeFrontPower.com

STAMP:

**NOT FOR
CONSTRUCTION**

**CENTRAL USD
STEINBECK ES**

3550 N.MILBURN AVE
FRESNO, CA

PROJECT NUMBER:
CA-14-0825

SHEET TITLE:
CONCEPTUAL LAYOUT

SHEET SIZE:
TABLOID 11" X 17"

THIS DRAWING IS THE PROPERTY OF FOREFRONT POWER, LLC. THIS INFROMATION IS CONFIDENTIAL AND IS TO BE USED ONLY IN CONNECTION WITH WORK DESCRIBED BY FOREFRONT POWER, LLC. NO PART IS TO BE DISCLOSED TO OTHERS WITHOUT WRITTEN PERMISSION FROM FOREFRONT POWER, LLC.

| NO. | REVISION | DATE | INIT. |
|-----|----------|------|-------|
| | | | |
| | | | |
| | | | |
| | | | |

DATE: 11-Mar-2019

DRAWN BY: RP

ENGINEER: RP

APPROVED BY:

PROJECT PHASE:
PRELIMINARY DESIGN

SCALE: 1" : 100'

SHEET NO:

CL-1


| SYSTEM DESCRIPTION | |
|--------------------------|------------------------------|
| MODULE TYPE | Longi LR6_72HPH_380M |
| QUANTITY | 486 |
| INVERTERS | (2) PVI 60TL (1) PVI 36TL |
| SYSTEM SIZE (DC) | 184.68 kW |
| SYSTEM SIZE (AC) | 156.00 kW |
| LAT/LONG | 36.7295;-119.8615 |
| AZIMUTH ANGLE | 270° |
| TILT ANGLE | 7° |
| SNOWLOAD | 0 PSF |
| WINDSPEED | 110 MPH |
| SEISMIC CATEGORY | C |
| NO.OF TREES/LIGHTP | 11/3 |
| TOTAL ADA SPACES/COVERED | 5/2 |

NOTE: DESKTOP ANALYSIS OF TOPOGRAPHY AND TREE HEIGHTS WERE ASSUMED FOR THE DESIGNS. FINAL SYSTEM SIZE AND LOCATION WILL VARY BASED ON FURTHER DILIGENCE

CANOPY BLOCK DETAILS
10 STRING CANOPY BLOCK : 2
6 STRING CANOPY BLOCKS: 0
7 STRING CANOPY BLOCKS: 1

MINIMUM CANOPY CLEARANCE IS 10'0"
UNLESS OTHERWISE SPECIFIED





**FOREFRONT
POWER**

2017 FOREFRONT POWER, LLC AND ITS
AFFILIATES ALL RIGHTS RESERVED

100 MONTGOMERY STREET #1400
SAN FRANCISCO, CA 94104
(855) 204-5083
www.ForeFrontPower.com

STAMP:

**NOT FOR
CONSTRUCTION**

**CENTRAL USD
MADISON ES**

330 S. BRAWLEY AVE,
FRESNO, CA 93706

PROJECT NUMBER:
CA-14-0826

SHEET TITLE:
CONCEPTUAL LAYOUT

SHEET SIZE:
TABLOID 11" X 17"

THIS DRAWING IS THE PROPERTY OF FOREFRONT POWER, LLC. THIS INFORMATION IS CONFIDENTIAL AND IS TO BE USED ONLY IN CONNECTION WITH WORK DESCRIBED BY FOREFRONT POWER, LLC. NO PART IS TO BE DISCLOSED TO OTHERS WITHOUT WRITTEN PERMISSION FROM FOREFRONT POWER, LLC.

| NO. | REVISION | DATE | INIT. |
|-----|----------|------|-------|
| | | | |
| | | | |
| | | | |
| | | | |

DATE: 14-JAN-2019

DRAWN BY: RP

ENGINEER: RP

APPROVED BY:

PROJECT PHASE:
PRELIMINARY DESIGN

SCALE: 1" : 70'

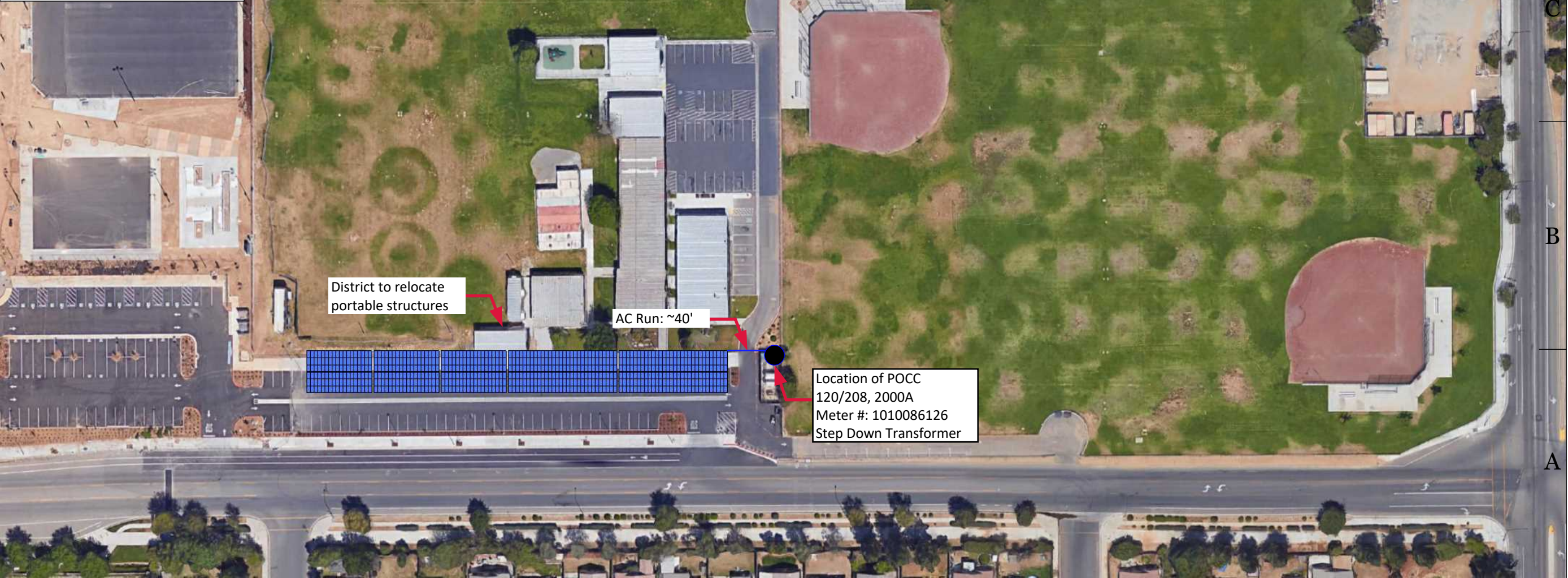
SHEET NO:

CL-1

| SYSTEM DESCRIPTION | |
|--------------------------|------------------------------|
| MODULE TYPE | Longi LR6_72HPH_370M |
| QUANTITY | 684 |
| INVERTERS | (2) PVI 60TL (3) PVI 36TL |
| SYSTEM SIZE (DC) | 253.08 kW |
| SYSTEM SIZE (AC) | 228.00 kW; 235.09 KW CEC |
| LAT/LONG | 36.8050;-119.8894 |
| AZIMUTH ANGLE | 180° |
| TILT ANGLE | 7° |
| SNOWLOAD | 0 PSF |
| WINDSPEED | 110 MPH |
| SEISMIC CATEGORY | B |
| NO.OF TREES/LIGHTP | 2/5 |
| TOTAL ADA SPACES/COVERED | 4/4 |

NOTE: DESKTOP ANALYSIS OF TOPOGRAPHY AND TREE HEIGHTS WERE ASSUMED FOR THE DESIGNS. FINAL SYSTEM SIZE AND LOCATION WILL VARY BASED ON FURTHER DILIGENCE

CANOPY BLOCK DETAILS
10 STRING CANOPY BLOCK : 2
6 STRING CANOPY BLOCKS: 3





**FOREFRONT
POWER**

2017 FOREFRONT POWER, LLC AND ITS
AFFILIATES ALL RIGHTS RESERVED

100 MONTGOMERY STREET #1400
SAN FRANCISCO, CA 94104
(855) 204-5083
www.ForeFrontPower.com

STAMP:

**NOT FOR
CONSTRUCTION**

**CENTRAL USD
TEAGUE ES &
DISTRICT OFFICE**

4775 N. POLK AVE
FRESNO, CA 93722

PROJECT NUMBER:
CA-14-0828

SHEET TITLE:
CONCEPTUAL LAYOUT

SHEET SIZE:
TABLOID 11" X 17"

THIS DRAWING IS THE PROPERTY OF FOREFRONT POWER, LLC. THIS INFROMATION IS CONFIDENTIAL AND IS TO BE USED ONLY IN CONNECTION WITH WORK DESCRIBED BY FOREFRONT POWER, LLC. NO PART IS TO BE DISCLOSED TO OTHERS WITHOUT WRITTEN PERMISSION FROM FOREFRONT POWER, LLC.

| NO. | REVISION | DATE | INIT. |
|-----|----------|------|-------|
| | | | |
| | | | |
| | | | |
| | | | |

DATE: 12-Apr-2019
DRAWN BY: RP
ENGINEER: RP
APPROVED BY:

PROJECT PHASE:
PRELIMINARY DESIGN
SCALE: 1" : 100'


SHEET NO:
CL-1

| SYSTEM DESCRIPTION | |
|--------------------------|------------------------------|
| MODULE TYPE | Longi LR6_72HPH_380M |
| QUANTITY | 648 |
| INVERTERS | (1) PVI 60TL (4) PVI 36TL |
| SYSTEM SIZE (DC) | 246.24 kW |
| SYSTEM SIZE (AC) | 204.00 kW |
| LAT/LONG | 36.8264;-119.9172 |
| AZIMUTH ANGLE | 270° |
| TILT ANGLE | 7° |
| SNOWLOAD | 0 PSF |
| WINDSPEED | 110 MPH |
| SEISMIC CATEGORY | B |
| NO.OF TREES/LIGHTP | 22/5 |
| TOTAL ADA SPACES/COVERED | 4/4 |

NOTE: DESKTOP ANALYSIS OF TOPOGRAPHY AND TREE HEIGHTS WERE ASSUMED FOR THE DESIGNS. FINAL SYSTEM SIZE AND LOCATION WILL VARY BASED ON FURTHER DILIGENCE

CANOPY BLOCK DETAILS
5 STRING CANOPY BLOCK : 2
6 STRING CANOPY BLOCKS: 2
7 STRING CANOPY BLOCKS: 2





**FOREFRONT
POWER**

2017 FOREFRONT POWER, LLC AND ITS
AFFILIATES ALL RIGHTS RESERVED

100 MONTGOMERY STREET #1400
SAN FRANCISCO, CA 94104
(855) 204-5083
www.ForeFrontPower.com

STAMP:

**NOT FOR
CONSTRUCTION**

**CENTRAL USD
HERNDON
BARSTOW ES**

6262 N. GRANTLAND AVE
FRESNO, CA 92723

PROJECT NUMBER:
CA-14-0830

SHEET TITLE:
CONCEPTUAL LAYOUT

SHEET SIZE:
TABLOID 11" X 17"

THIS DRAWING IS THE PROPERTY OF FOREFRONT POWER, LLC. THIS INFROMATION IS CONFIDENTIAL AND IS TO BE USED ONLY IN CONNECTION WITH WORK DESCRIBED BY FOREFRONT POWER, LLC. NO PART IS TO BE DISCLOSED TO OTHERS WITHOUT WRITTEN PERMISSION FROM FOREFRONT POWER, LLC.

| NO. | REVISION | DATE | INIT. |
|-----|----------|------|-------|
| | | | |
| | | | |
| | | | |
| | | | |

DATE: 11-Mar-2019

DRAWN BY: RP

ENGINEER: RP

APPROVED BY:

PROJECT PHASE:
PRELIMINARY DESIGN

SCALE: 1" : 90'

SHEET NO:


CL-1

| SYSTEM DESCRIPTION | |
|--------------------------|------------------------------|
| MODULE TYPE | Longi LR6_72PH_370M |
| QUANTITY | 684 |
| INVERTERS | (2) PVI 60TL (3) PVI 36TL |
| SYSTEM SIZE (DC) | 253.08 kW |
| SYSTEM SIZE (AC) | 228.00 kW |
| LAT/LONG | 36.8343;-119.9044 |
| AZIMUTH ANGLE | 270°;180° |
| TILT ANGLE | 7° |
| SNOWLOAD | 0 PSF |
| WINDSPEED | 110 MPH |
| SEISMIC CATEGORY | B |
| NO.OF TREES/LIGHTP | ~19/3 |
| TOTAL ADA SPACES/COVERED | 4/1 |

NOTE: DESKTOP ANALYSIS OF TOPOGRAPHY AND TREE HEIGHTS WERE ASSUMED FOR THE DESIGNS. FINAL SYSTEM SIZE AND LOCATION WILL VARY BASED ON FURTHER DILIGENCE

CANOPY BLOCK DETAILS
10 STRING CANOPY BLOCK : 2
6 STRING CANOPY BLOCKS: 3
7 STRING CANOPY BLOCKS: 0





**FOREFRONT
POWER**

2017 FOREFRONT POWER, LLC AND ITS
AFFILIATES ALL RIGHTS RESERVED

100 MONTGOMERY STREET #1400
SAN FRANCISCO, CA 94104
(855) 204-5083
www.ForeFrontPower.com

STAMP:

**NOT FOR
CONSTRUCTION**

**CENTRAL USD
LIDDEL ES**

5455 W ALLUVIAL AVE,
FRESNO, CA 93722

PROJECT NUMBER:
CA-14-0831

SHEET TITLE:
CONCEPTUAL LAYOUT

SHEET SIZE:
TABLOID 11" X 17"

THIS DRAWING IS THE PROPERTY OF FOREFRONT
POWER, LLC. THIS INFROMATION IS CONFIDENTIAL
AND IS TO BE USED ONLY IN CONNECTION WITH WORK
DESCRIBED BY FOREFRONT POWER, LLC.
NO PART IS TO BE DISCLOSED TO OTHERS WITHOUT
WRITTEN PERMISSION FROM FOREFRONT POWER, LLC.

| NO. | REVISION | DATE | INIT. |
|-----|----------|------|-------|
| | | | |
| | | | |
| | | | |
| | | | |

DATE: 13-AUG-2018

DRAWN BY: RP

ENGINEER: RP

APPROVED BY:

PROJECT PHASE:
PRELIMINARY DESIGN

SCALE: 1" : 70'

SHEET NO:

CL-1

| SYSTEM DESCRIPTION | |
|--------------------------|-------------------------------|
| MODULE TYPE | Longi LR6_72HPH_380M |
| QUANTITY | 1980 |
| INVERTERS | (4) PVI 60TL (11) PVI 36TL |
| SYSTEM SIZE (DC) | 752.40 kW |
| SYSTEM SIZE (AC) | 636.00 kW |
| LAT/LONG | 36.8343;-119.9044 |
| AZIMUTH ANGLE | 270°;180° |
| TILT ANGLE | 7° |
| SNOWLOAD | 0 PSF |
| WINDSPEED | 110 MPH |
| SEISMIC CATEGORY | B |
| NO.OF TREES/LIGHTP | ~30/7 |
| TOTAL ADA SPACES/COVERED | 8/0 |

NOTE: DESKTOP ANALYSIS OF TOPOGRAPHY AND TREE HEIGHTS WERE ASSUMED FOR THE DESIGNS. FINAL SYSTEM SIZE AND LOCATION WILL VARY BASED ON FURTHER DILIGENCE

CANOPY BLOCK DETAILS
10 STRING CANOPY BLOCK : 4
6 STRING CANOPY BLOCKS: 7
7 STRING CANOPY BLOCKS: 4

DEFAULT CANOPY CLEARANCE IS 10'0"
UNLESS OTHERWISE SPECIFIED





**FOREFRONT
POWER**

2017 FOREFRONT POWER, LLC AND ITS
AFFILIATES ALL RIGHTS RESERVED

100 MONTGOMERY STREET #1400
SAN FRANCISCO, CA 94104
(855) 204-5083
www.ForeFrontPower.com

STAMP:

**NOT FOR
CONSTRUCTION**

**CENTRAL USD
RIO VISTA MS**

6240 W. PALO ALTO AVE
FRESNO, CA 93722

PROJECT NUMBER:
CA-14-0832

SHEET TITLE:
CONCEPTUAL LAYOUT

SHEET SIZE:
TABLOID 11" X 17"

THIS DRAWING IS THE PROPERTY OF FOREFRONT POWER, LLC. THIS INFORMATION IS CONFIDENTIAL AND IS TO BE USED ONLY IN CONNECTION WITH WORK DESCRIBED BY FOREFRONT POWER, LLC. NO PART IS TO BE DISCLOSED TO OTHERS WITHOUT WRITTEN PERMISSION FROM FOREFRONT POWER, LLC.

| NO. | REVISION | DATE | INIT. |
|-----|----------|------|-------|
| | | | |
| | | | |
| | | | |
| | | | |

DATE: 14-JAN-2019

DRAWN BY: RP

ENGINEER: RP

APPROVED BY:

PROJECT PHASE:
PRELIMINARY DESIGN

SCALE: 1" : 70'

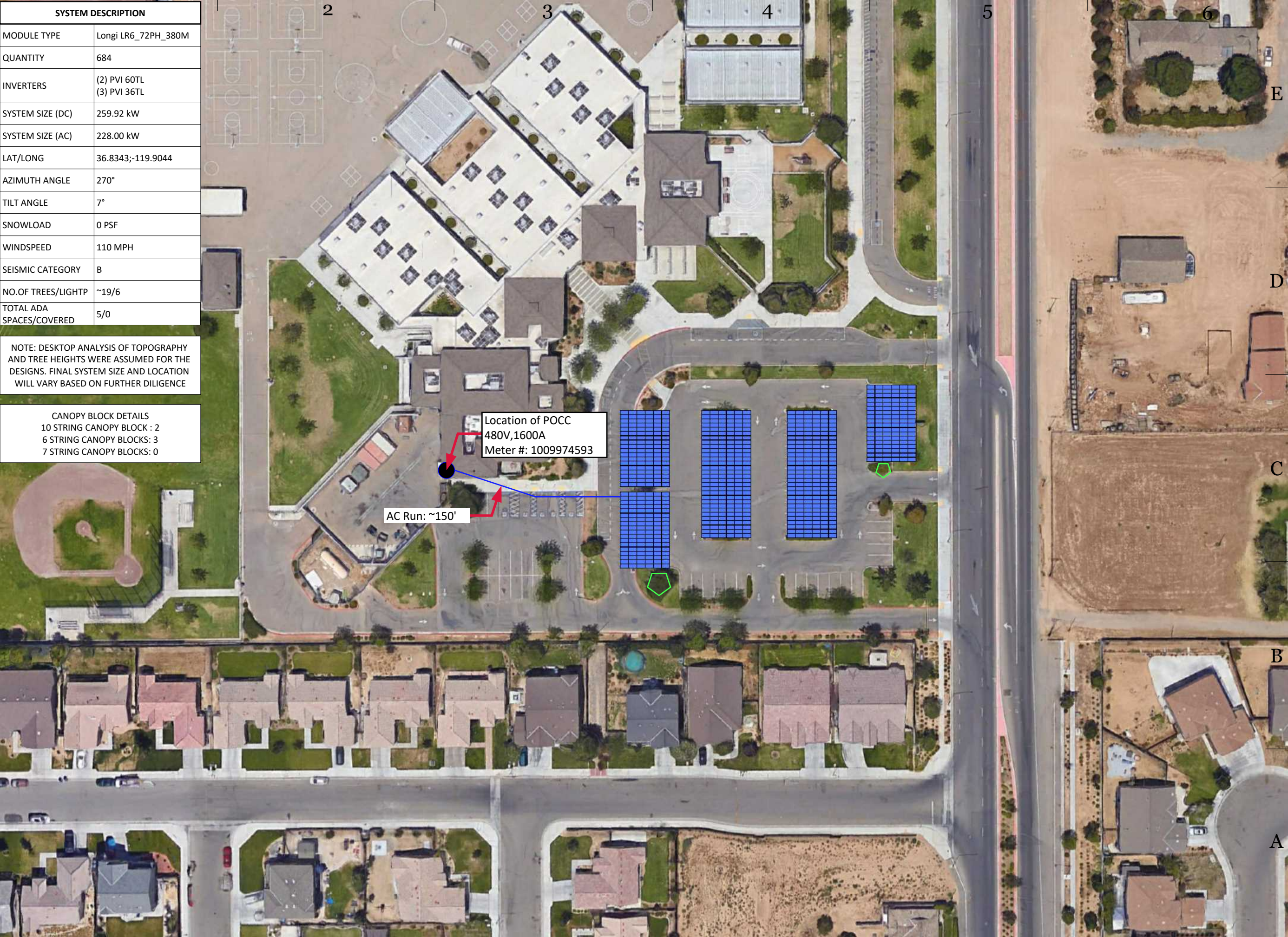
SHEET NO:


CL-1

| SYSTEM DESCRIPTION | |
|--------------------------|------------------------------|
| MODULE TYPE | Longi LR6_72PH_380M |
| QUANTITY | 684 |
| INVERTERS | (2) PVI 60TL (3) PVI 36TL |
| SYSTEM SIZE (DC) | 259.92 kW |
| SYSTEM SIZE (AC) | 228.00 kW |
| LAT/LONG | 36.8343;-119.9044 |
| AZIMUTH ANGLE | 270° |
| TILT ANGLE | 7° |
| SNOWLOAD | 0 PSF |
| WINDSPEED | 110 MPH |
| SEISMIC CATEGORY | B |
| NO.OF TREES/LIGHTP | ~19/6 |
| TOTAL ADA SPACES/COVERED | 5/0 |

NOTE: DESKTOP ANALYSIS OF TOPOGRAPHY AND TREE HEIGHTS WERE ASSUMED FOR THE DESIGNS. FINAL SYSTEM SIZE AND LOCATION WILL VARY BASED ON FURTHER DILIGENCE

CANOPY BLOCK DETAILS
10 STRING CANOPY BLOCK : 2
6 STRING CANOPY BLOCKS: 3
7 STRING CANOPY BLOCKS: 0





**FOREFRONT
POWER**

2017 FOREFRONT POWER, LLC AND ITS
AFFILIATES ALL RIGHTS RESERVED

100 MONTGOMERY STREET #1400
SAN FRANCISCO, CA 94104
(855) 204-5083
www.ForeFrontPower.com

STAMP:

**NOT FOR
CONSTRUCTION**

**CENTRAL USD
POLK ES**

2195 N.POLK AVE,
FRESNO, CA 93722

PROJECT NUMBER:
CA-14-0834

SHEET TITLE:
CONCEPTUAL LAYOUT

SHEET SIZE:
TABLOID 11" X 17"

THIS DRAWING IS THE PROPERTY OF FOREFRONT POWER, LLC. THIS INFROMATION IS CONFIDENTIAL AND IS TO BE USED ONLY IN CONNECTION WITH WORK DESCRIBED BY FOREFRONT POWER, LLC. NO PART IS TO BE DISCLOSED TO OTHERS WITHOUT WRITTEN PERMISSION FROM FOREFRONT POWER, LLC.

| NO. | REVISION | DATE | INIT. |
|-----|----------|------|-------|
| | | | |
| | | | |
| | | | |
| | | | |

DATE: 11-Mar-2019

DRAWN BY: RP

ENGINEER: RP

APPROVED BY:

PROJECT PHASE:
PRELIMINARY DESIGN

SCALE: 1" : 70'


SHEET NO:
CL-1

| SYSTEM DESCRIPTION | |
|--------------------------|-------------------------------|
| MODULE TYPE | Longi LR6_72PH_370M |
| QUANTITY | 2016 |
| INVERTERS | (10) PVI 60TL (2) PVI 36TL |
| SYSTEM SIZE (DC) | 745.92 kW |
| SYSTEM SIZE (AC) | 672.00 kW |
| LAT/LONG | 36.7377;-119.7871 |
| AZIMUTH ANGLE | 270° |
| TILT ANGLE | 7° |
| SNOWLOAD | 0 PSF |
| WINDSPEED | 110 MPH |
| SEISMIC CATEGORY | C |
| NO.OF TREES/LIGHTP | ~4/10 |
| TOTAL ADA SPACES/COVERED | 20/0 |

NOTE: DESKTOP ANALYSIS OF TOPOGRAPHY AND TREE HEIGHTS WERE ASSUMED FOR THE DESIGNS. FINAL SYSTEM SIZE AND LOCATION WILL VARY BASED ON FURTHER DILIGENCE

CANOPY BLOCK DETAILS
10 STRING CANOPY BLOCK : 10
6 STRING CANOPY BLOCKS: 2
7 STRING CANOPY BLOCKS: 0





**FOREFRONT
POWER**

2017 FOREFRONT POWER, LLC AND ITS
AFFILIATES ALL RIGHTS RESERVED

100 MONTGOMERY STREET #1400
SAN FRANCISCO, CA 94104
(855) 204-5083
www.ForeFrontPower.com

STAMP:

**NOT FOR
CONSTRUCTION**

**CENTRAL USD
HARVEST ES
STADIUM
GLACIER MS**

4200 N. GRANTLAND AVE
FRESNO, CA 93722

PROJECT NUMBER:
CA-16-0166

SHEET TITLE:
CONCEPTUAL LAYOUT

SHEET SIZE:
TABLOID 11" X 17"

THIS DRAWING IS THE PROPERTY OF FOREFRONT
POWER, LLC. THIS INFROMATION IS CONFIDENTIAL
AND IS TO BE USED ONLY IN CONNECTION WITH WORK
DESCRIBED BY FOREFRONT POWER, LLC.
NO PART IS TO BE DISCLOSED TO OTHERS WITHOUT
WRITTEN PERMISSION FROM FOREFRONT POWER, LLC.

| NO. | REVISION | DATE | INIT. |
|-----|----------|------|-------|
| | | | |
| | | | |
| | | | |
| | | | |

DATE: 18-AUG-2018

DRAWN BY: RP

ENGINEER: RP

APPROVED BY:

PROJECT PHASE:
PRELIMINARY DESIGN

SCALE: 1" : 150'

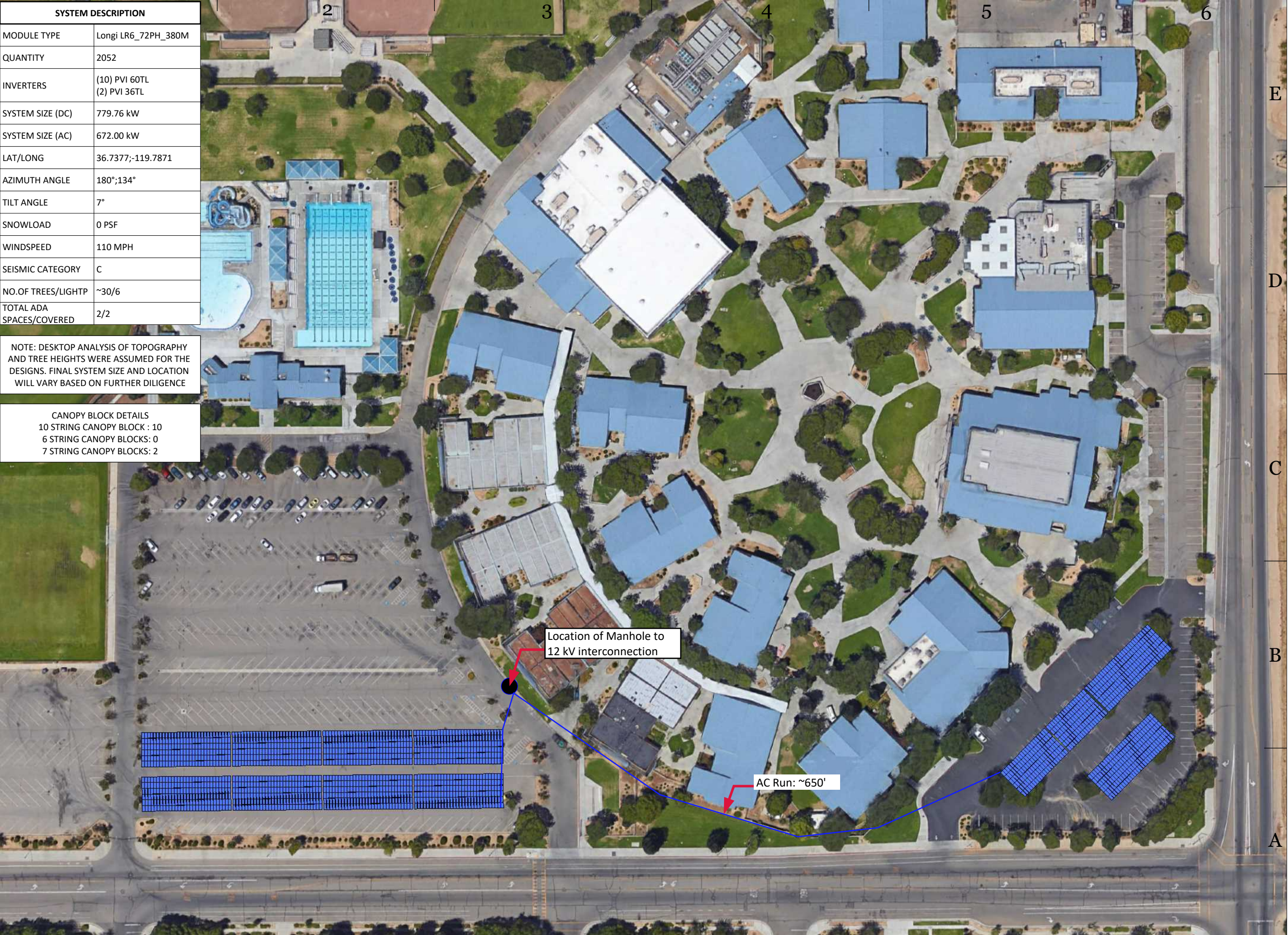
SHEET NO:


CL-1

| SYSTEM DESCRIPTION | |
|--------------------------|-------------------------------|
| MODULE TYPE | Longi LR6_72PH_380M |
| QUANTITY | 2052 |
| INVERTERS | (10) PVI 60TL (2) PVI 36TL |
| SYSTEM SIZE (DC) | 779.76 kW |
| SYSTEM SIZE (AC) | 672.00 kW |
| LAT/LONG | 36.7377;-119.7871 |
| AZIMUTH ANGLE | 180°;134° |
| TILT ANGLE | 7° |
| SNOWLOAD | 0 PSF |
| WINDSPEED | 110 MPH |
| SEISMIC CATEGORY | C |
| NO.OF TREES/LIGHTP | ~30/6 |
| TOTAL ADA SPACES/COVERED | 2/2 |

NOTE: DESKTOP ANALYSIS OF TOPOGRAPHY AND TREE HEIGHTS WERE ASSUMED FOR THE DESIGNS. FINAL SYSTEM SIZE AND LOCATION WILL VARY BASED ON FURTHER DILIGENCE

CANOPY BLOCK DETAILS
10 STRING CANOPY BLOCK : 10
6 STRING CANOPY BLOCKS: 0
7 STRING CANOPY BLOCKS: 2





**FOREFRONT
POWER**

2017 FOREFRONT POWER, LLC AND ITS
AFFILIATES ALL RIGHTS RESERVED

100 MONTGOMERY STREET #1400
SAN FRANCISCO, CA 94104
(855) 204-5083
www.ForeFrontPower.com

STAMP:

**NOT FOR
CONSTRUCTION**

**CENTRAL USD
CENTRAL EAST HS**

3535 N.CORNELIA AVE,
FRESNO, CA 93722

PROJECT NUMBER:
CA-16-0167

SHEET TITLE:
CONCEPTUAL LAYOUT

SHEET SIZE:
TABLOID 11" X 17"

THIS DRAWING IS THE PROPERTY OF FOREFRONT
POWER, LLC. THIS INFROMATION IS CONFIDENTIAL
AND IS TO BE USED ONLY IN CONNECTION WITH WORK
DESCRIBED BY FOREFRONT POWER, LLC.
NO PART IS TO BE DISCLOSED TO OTHERS WITHOUT
WRITTEN PERMISSION FROM FOREFRONT POWER, LLC.

| NO. | REVISION | DATE | INIT. |
|-----|----------|------|-------|
| | | | |
| | | | |
| | | | |
| | | | |

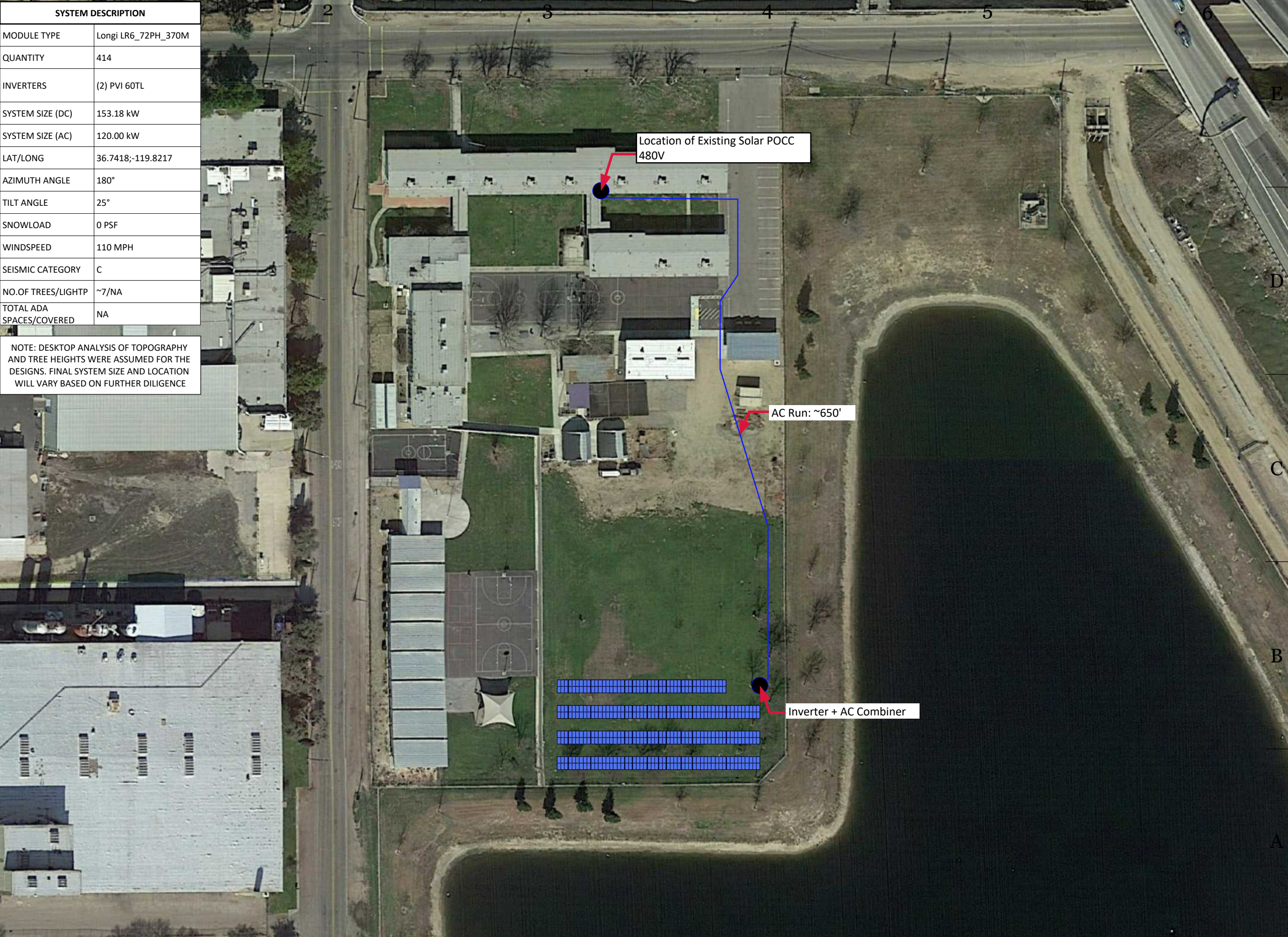
DATE: 14-JAN-2019
DRAWN BY: RP
ENGINEER: RP
APPROVED BY:


PROJECT PHASE:
PRELIMINARY DESIGN
SCALE: 1" : 100'

SHEET NO:
CL-1

| SYSTEM DESCRIPTION | |
|--------------------------|---------------------|
| MODULE TYPE | Longi LR6_72PH_370M |
| QUANTITY | 414 |
| INVERTERS | (2) PVI 60TL |
| SYSTEM SIZE (DC) | 153.18 kW |
| SYSTEM SIZE (AC) | 120.00 kW |
| LAT/LONG | 36.7418;-119.8217 |
| AZIMUTH ANGLE | 180° |
| TILT ANGLE | 25° |
| SNOWLOAD | 0 PSF |
| WINDSPEED | 110 MPH |
| SEISMIC CATEGORY | C |
| NO.OF TREES/LIGHTP | ~7/NA |
| TOTAL ADA SPACES/COVERED | NA |

NOTE: DESKTOP ANALYSIS OF TOPOGRAPHY AND TREE HEIGHTS WERE ASSUMED FOR THE DESIGNS. FINAL SYSTEM SIZE AND LOCATION WILL VARY BASED ON FURTHER DILIGENCE





**FOREFRONT
POWER**

2017 FOREFRONT POWER, LLC AND ITS
AFFILIATES ALL RIGHTS RESERVED

100 MONTGOMERY STREET #1400
SAN FRANCISCO, CA 94104
(855) 204-5083
www.ForeFrontPower.com

STAMP:

**NOT FOR
CONSTRUCTION**

**CENTRAL USD
PATHWAY
COMMUNITY
SCHOOL**

11 S.TEILMAN AVE,
FRESNO, CA 93722

PROJECT NUMBER:
CA-16-0168

SHEET TITLE:
CONCEPTUAL LAYOUT

SHEET SIZE:
TABLOID 11" X 17"

THIS DRAWING IS THE PROPERTY OF FOREFRONT POWER, LLC. THIS INFROMATION IS CONFIDENTIAL AND IS TO BE USED ONLY IN CONNECTION WITH WORK DESCRIBED BY FOREFRONT POWER, LLC. NO PART IS TO BE DISCLOSED TO OTHERS WITHOUT WRITTEN PERMISSION FROM FOREFRONT POWER, LLC.

| NO. | REVISION | DATE | INIT. |
|-----|----------|------|-------|
| | | | |
| | | | |
| | | | |
| | | | |

DATE: 15-June-2019

DRAWN BY: RP

ENGINEER: RP

APPROVED BY:

PROJECT PHASE:
PRELIMINARY DESIGN

SCALE: 1" : 80'

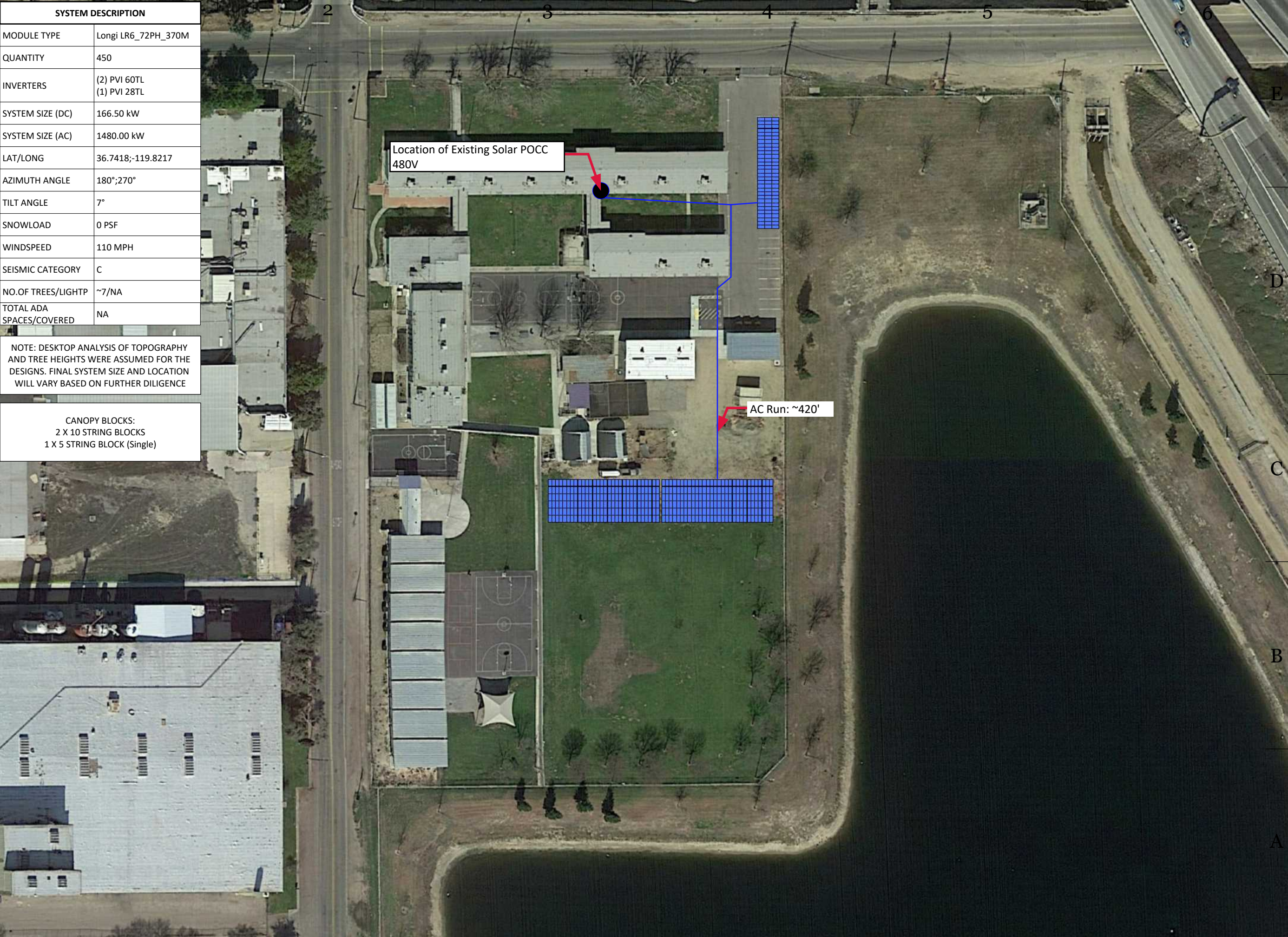
SHEET NO:


CL-1

| SYSTEM DESCRIPTION | |
|--------------------------|------------------------------|
| MODULE TYPE | Longi LR6_72PH_370M |
| QUANTITY | 450 |
| INVERTERS | (2) PVI 60TL (1) PVI 28TL |
| SYSTEM SIZE (DC) | 166.50 kW |
| SYSTEM SIZE (AC) | 1480.00 kW |
| LAT/LONG | 36.7418;-119.8217 |
| AZIMUTH ANGLE | 180°;270° |
| TILT ANGLE | 7° |
| SNOWLOAD | 0 PSF |
| WINDSPEED | 110 MPH |
| SEISMIC CATEGORY | C |
| NO.OF TREES/LIGHTP | ~7/NA |
| TOTAL ADA SPACES/COVERED | NA |

NOTE: DESKTOP ANALYSIS OF TOPOGRAPHY AND TREE HEIGHTS WERE ASSUMED FOR THE DESIGNS. FINAL SYSTEM SIZE AND LOCATION WILL VARY BASED ON FURTHER DILIGENCE

CANOPY BLOCKS:
2 X 10 STRING BLOCKS
1 X 5 STRING BLOCK (Single)





**FOREFRONT
POWER**

2017 FOREFRONT POWER, LLC AND ITS
AFFILIATES ALL RIGHTS RESERVED

100 MONTGOMERY STREET #1400
SAN FRANCISCO, CA 94104
(855) 204-5083
www.ForeFrontPower.com

STAMP:

**NOT FOR
CONSTRUCTION**

**CENTRAL USD
PATHWAY
COMMUNITY
SCHOOL**

11 S.TEILMAN AVE,
FRESNO, CA 93722

PROJECT NUMBER:
CA-16-0168

SHEET TITLE:
CONCEPTUAL LAYOUT

SHEET SIZE:
TABLOID 11" X 17"

THIS DRAWING IS THE PROPERTY OF FOREFRONT POWER, LLC. THIS INFROMATION IS CONFIDENTIAL AND IS TO BE USED ONLY IN CONNECTION WITH WORK DESCRIBED BY FOREFRONT POWER, LLC. NO PART IS TO BE DISCLOSED TO OTHERS WITHOUT WRITTEN PERMISSION FROM FOREFRONT POWER, LLC.

| NO. | REVISION | DATE | INIT. |
|-----|----------|------|-------|
| | | | |
| | | | |
| | | | |
| | | | |

DATE: 15-June-2019

DRAWN BY: RP

ENGINEER: RP

APPROVED BY:

PROJECT PHASE:
PRELIMINARY DESIGN

SCALE: 1" : 80'

SHEET NO:
CL-1